

LIVES at University of Geneva: Annual Report 2024

1. Foreword

The **Swiss Centre of Expertise in Life Course Research LIVES** (LIVES Centre) is the successor of the National Centre of Competence in Research LIVES "Overcoming vulnerability: a life-course perspective" (NCCR LIVES; 2011 to 2022) and it is jointly hosted at the University of Lausanne and the University of Geneva. The NCCR was transformed into a permanent entity within the University of Geneva as a research pole at the Centre for Interdisciplinary Studies on Gerontology and Vulnerability (CIGEV). Within the University of Lausanne, the NCCR became the Centre Interdisciplinaire de Recherche LIVES.

The LIVES Centre produced annually two activities reports, one for its activities at the University of Geneva and one for its activities at the University of Lausanne. The aim of the present report is to inform about the research and output activities of the LIVES Centre at the University of Geneva in 2024 and to present the outlook for the upcoming year (2025). Although most activities are conducted in collaboration with LIVES members in both the University of Geneva and the University of Lausanne, this report focuses on the University of Geneva.

2. Mission and objectives

The mission of the LIVES Centre was established in the 2018 agreement signed by the rectorates of the Universities of Lausanne and Geneva. Its three primary objectives are outlined below and will be elaborated in the following sections, alongside our future outlook. These objectives are:

1. Establish the LIVES Centre as a national and international leader in interdisciplinary research on life course and vulnerability, particularly by fostering innovative research projects.
2. Support the development of the next generation of researchers in the field of life course and vulnerability, primarily through the doctoral program.
3. Facilitate the transfer of knowledge on life course and vulnerability to professionals and the broader public, notably through policy briefs and events.

3. Portrait of LIVES at the University of Geneva

3.1. Governance

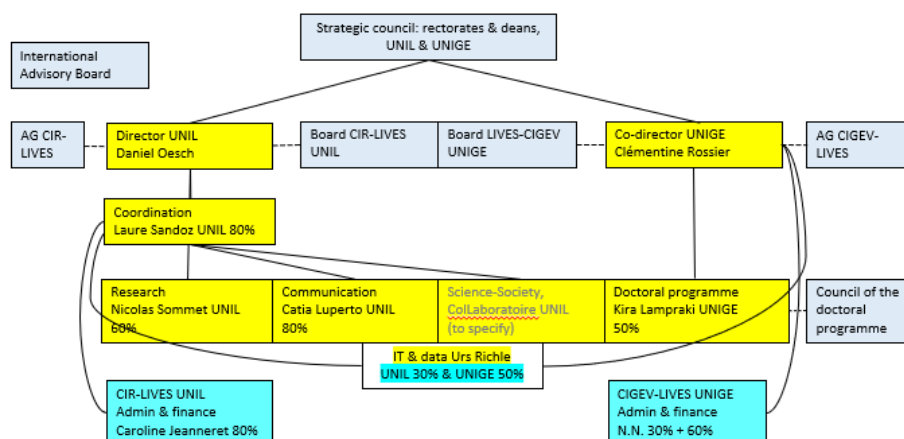
The LIVES Centre is based within the CIGEV at the University of Geneva. As depicted in Figure 1, LIVES at the University of Geneva is governed by the following organs:

- A director: Prof. Clémentine Rossier (2023-2026), who succeeded Prof. Eric Widmer (2016-2022).
- A general assembly that meets once a year and comprises all LIVES members in the University of Geneva or those affiliated to it.
- A board that meets three times a year and supports the director to take strategic decisions. In 2024, it is composed by 4 professors, as well as the director of CIGEV Prof. Matthias Kliegel. The faculty of Psychology and Educational Sciences is represented by Prof. Andreas Ihle, the faculty of Social Sciences by Prof. Eric Widmer and Prof. Claudine Burton-Jeangros, the Geneva School of Economics and Management by Prof. Michele

Pelizzari. Since 2023 the board has gained one member (a younger professor) and the main faculties are now all represented.

A similar structure governs the LIVES Centre in the University of Lausanne, directed by Prof. Daniel Oesch. Although the two poles of the LIVES Centre have separate financial and administrative functions, the two co-directors jointly plan the scientific and research activities. An International Advisory Board of six experts in life course research guides the overall activities of the LIVES Centre, in an annual meeting. A Strategic Council, composed of the rectorate and one dean from the Universities of Geneva and Lausanne, oversees its overall functioning.

Figure 1. Organisational Structure of the LIVES Centre



3.2. Members

The LIVES at the University of Geneva includes 63 members at the end of 2024, a stable number since 2023 (about one third of the total number of members of the LIVES Centre). These [members](#) belong mainly to the Faculties of Social sciences, Psychology and Educational Sciences and the Geneva School of Economics and Management. However, some also come from other Faculties of the University of Geneva or are affiliated members from other institutions such as the University of Applied Sciences and Arts of Western Switzerland (HES-SO) and other Universities in Switzerland and abroad. These affiliated researchers have been LIVES members at the University of Geneva previously or have participated to research activities with LIVES members at the University of Geneva. Any researcher interested in life course and vulnerability research at the University of Geneva can become member, subject to approval of the director. The list of members is updated once a year: all members who left the University of Geneva over the year are contacted and asked whether they want to stay a member.

3.3. Resources

The resources of LIVES at the University of Geneva in 2024 include staff, infrastructure, research funding from external sources, budgetary surpluses from the NCCR-LIVES and, in 2024, an annual operating budget of 60,043 CHF, provided by the University of Geneva.

Staff: The administrative and technical staff of LIVES-UNIGE includes a scientific officer (50%), an IT and data manager (50%), a secretary (30%) and administrative officer (60%; see Figure 1). In 2024, we were able to recruit a new scientific officer (the previous scientific officer was there for 10 years), and a permanent replacement for the administrative officer (who is still on long term

sick leave). The recruitment of a new secretary is planned for early 2025. Thanks to the rationalization of the doctorale programme, part of the scientific officer's tasks could be allocated to support the management of LIVES at the University of Geneva. Moreover, the University of Geneva has financed (or re-defined) in-kind positions for 5 professors as part of its NCCR commitments. (Professors Jean-Michel Bonvin, Andreas Ihle, Michele Pellizzari, Clémentine Rossier, Matthias Studer,) as well as a senior researcher (Myriam Girardin).

The director of LIVES can, in principle, request an exemption from teaching duties for one course from the University of Geneva, and receives 300 CHF per month as indemnity for the position. However, Prof. Rossier already occupied the director position at her institute (Institute of Demography and Socioeconomics, Faculty of Social Sciences) and was, therefore, exempted from the additional indemnity as the director of LIVES. Moreover, although she requested an exemption from teaching duties, her request was denied from the Faculty of Social Sciences, due to budgetary cuts in the funding. The director of LIVES at the University of Lausanne has been exempted from teaching one course during his term, as well as the director of CIGEV.

Research funds: For 2024, the LIVES Centre has 12 associated projects that are based in the University of Geneva with external funds that amounts in total 7 820 753 million CHF over their entire duration (Appendix A). Most of these projects are hosted and administratively managed within the principal investigators' faculties; projects who concern both LIVES (life course and vulnerability) as well as gerontology are hosted at CIGEV.

Surplus budget: For 2024, LIVES at UNIGE managed to spend all the rest of the budgetary surpluses from NCCR LIVES, which had two forms (see Appendix B): *CASH* (a total of 329,696 CHF over 2023-2024) and *IN-KIND* (a total of 107,529 CHF over 2023-2024).

The *CASH* surplus was utilized in several ways: funding a postdoctoral researcher for one year following a competitive call for applications (salary 117,722 CHF); subsidizing the SEED MONEY initiative (one grant of 11,577 CHF per year, supporting assistant professors at LIVES University of Geneva); the YOUNG SCHOLAR grants (3 in 2024, amounting to a total of 45,296 CHF for 2024); and the VISITING SCHOLAR initiative (3 in 2024, with each visit funded at 3,000 CHF, total for 2024 9,889 CHF). Additionally, 71,224 CHF supported LIVES researchers (primarily junior researchers) in various ways, based on calls open to all LIVES at the University of Geneva members. This included conference expenses, open-access publishing, special support for federal scholarship recipients, book editing, and other needs.

The *IN-KIND* surplus was primarily used to address the absence of two administrative staff members at CIGEV, both of whom were on long-term sick leave, and provide administrative assistance to LIVES at the University of Geneva. By mid-2024, a stable replacement was recruited for the administrator role, and a permanent recruitment process is underway for the secretary in 2025. Finally, occasional support for teaching and research (total 8,331 CHF) were allocated to several LIVES professors at the University of Geneva.

Operating budget: The operating budget is provided by the Rectorate of the University of Geneva (*DIP*), in accordance with its commitment to the SNSF. In 2024 the LIVES at the University of Geneva benefitted from an operating budget of 60,043 CHF, which was reduced from the initial operating budget of 2023 (65,543 CHF) by 5,500 CHF due to budgetary constraints imposed by the University of Geneva to all centres and faculties. We spent all the operating budget in 2024.

Budget outlook for 2025: In 2025, the LIVES Centre at UNIGE will operate with only its core operating budget of 54,000 CHF, reduced from the 65,043 CHF originally stipulated in the UNIL-

UNIGE agreement establishing the LIVES Centre, due to budgetary restrictions. All activities, including various initiatives like the VISITING SCHOLAR and YOUNG SCHOLARS GRANT initiatives that were previously funded by the CASH surplus, must now be covered by the operating budget. As a result, we have to discontinue the highly valued YOUNG SCHOLARS GRANT initiative for 2025. Meanwhile, the LIVES Centre at the University of Lausanne will eventually have an operating budget of 110,000 CHF. However, LIVES at the University of Lausanne is still utilizing its remaining funds from previous budgets, enabling it to continue offering extensive support to its members in 2025, including SEED MONEY, YOUNG SCHOLARS GRANT, and VISITING SCHOLAR initiatives.

All joint activities organized by the LIVES Centre are co-funded by the Universities of Lausanne and Geneva, following the 1/3 2/3 principle, which takes into account the number of members and the differences in funding contributions from each university. LIVES at University of Geneva represents one third of the LIVES centre, LIVES at the University of Lausanne represents two thirds.

4. Activities and services

The LIVES Centre at the University of Lausanne and Geneva collaborate in the organisation of a series of activities that aim at fostering interdisciplinary research, training and communication on the life course and vulnerability.

4.1. Research activities

Working Groups: Since 2023, LIVES members have the opportunity to establish working groups focused on specific topics related to interdisciplinary research on the life course and vulnerability. These groups aim to foster the development of new research projects and funding applications. The LIVES Centre supports these initiatives with funding of up to 5,000 CHF annually. Currently, members of LIVES at the University of Geneva are leading 3 working groups (see Appendix C), and are also involved in other working groups that are based in the University of Lausanne.

Seed Money: The LIVES Centre provides support to senior researchers aiming to develop proposals for new research projects on life course and vulnerability. In 2024, the LIVES at the University of Geneva awarded funding to [one project](#) through this grant (Factors of Mortality in Old Age in Switzerland, Matthias Kliegel, Andreas Ihle, & Rainer Gabriel). This initiative was supported by the budgetary surplus of the NCCR.

Young Scholar Grants: The LIVES Centre supports doctoral students and postdoctoral researchers at the Universities of Lausanne and Geneva who aim to conduct innovative research on the life course. Through an annual competitive call, funding is provided for specific studies or projects. In 2024, the LIVES awarded funding to [3 researchers](#) based at the University of Geneva. For 2025, no call was launched for LIVES at the University of Geneva due to cuts in the operational budget. This decision will be reevaluated in 2025 for a call in 2026, depending on available funding.

Writing Retreat: In 2024 we organized a 4-day writing retreat dedicated to intensive writing. A call for the second edition was launched in 2024, and the writing retreat is scheduled to take place in February 2025 at the Schwarzsee Hotel in Fribourg, with 33 LIVES members participating (3 collective writing projects from members of LIVES-UNIGE were selected and 8 from LIVES UNIL).

Visitor Grants: The LIVES Centre aims to attract international researchers working on life course and vulnerability studies for visits of at least two months. Through a competitive call, applicants can receive up to CHF 3,000 to cover travel and accommodation expenses. In 2024, LIVES-UNIGE

hosted 3 visitors: two postdoctoral researchers (Riccardo Valente, Autonomous University of Barcelona; Elisa Thevenot, University of Tübingen), and one PhD student (Ying Shen, Vrije Universiteit Amsterdam). A new call for applications has been launched and evaluated for 2025.

Top-Down Project Development: The Advisory Board in its report of 2023 advised the LIVES Centre not only to promote the affiliation of bottom-up projects that have been developed by its members but also to take a step further. In line with this suggestion, three initiatives were pursued, all led by LIVES at the University of Lausanne. First, a time use survey project is currently under development, with an open call to LIVES members for work packages (UNIGE contributes one work package on ageing). Second, a project to have the Gender and Generation Programme implemented in Switzerland has been submitted to the FNS in October 2023 and 2024; researchers of LIVES at University of Geneva are co-leading several work-packages in this project on the family. Third, the LIVES research officer at the University of Lausanne developed a new, large scale and interdisciplinary project with the main goal of investigating subjective well-being across the life course in a global comparative perspective: a call to members also allowed researchers from LIVES at University of Geneva to be part of the project, submitted October 2024.

Data Management and IT: The LIVES Centre, supported by its IT officer, provides assistance to members with research on life course and vulnerability that involves technical and data-related challenges. This includes support for designing, creating, and hosting online surveys; data management tasks such as planning, visualization, storage, sharing, formatting, and archiving; as well as technical issues like setting up project websites and creating or maintaining dedicated servers.

Publications: The member of LIVES at the University of Geneva are asked to put a “LIVES” tag when entering their publications on Archives Ouvertes. LIVES Centre highlights its members' publications who were entered on the archives at Universities of Geneva and Lausanne with the LIVES tag on its website, providing visibility to their work (see Appendix D for publications with the LIVES tag at the University of Geneva in 2024 or collected via the effort described thereafter). In addition, in 2024, we asked members to indicate their best publications for 2023 and 2024, and we showcase these publications also on the [website](#). Additionally, the LIVES Centre publishes the [LIVES Working Papers](#) and collaborates with Springer on an open-access book series dedicated to life course research and social policies.

4.2 Scientific events

In line with the objectives and mission of the LIVES Centre several events take place annually, aiming at positioning the Centre as a national and international reference in interdisciplinary life course and vulnerability research, promoting the next generation of researchers and transferring knowledge on the life course and vulnerability towards professionals and the wider public.

LIVES International Conference: Since 2022, the LIVES Centre organizes an annual international conference with a focus on theoretically-based empirical research on the life course and vulnerability from disciplines including sociology, demography, psychology, economics, political science, epidemiology, and statistics. The [2024 edition](#) was organised in collaboration with the NCCR On the Move at the University of Geneva on 5-6 November, featuring 75 paper presentations, 12 posters and over 120 participants from across Europe.

LIVES Day: In addition to the International Conference, LIVES Centre organises an annual event dedicated to research conducted within the centre and to scientific exchange, bringing together LIVES members from the Universities of Geneva and Lausanne, as well as from other institutions.

In 2024, the [event](#) was organised at the University of Geneva and included two keynote lectures and 33 short presentations, with over 70 participants.

LIVES seminar at UNIGE: The LIVES at the University of Geneva organises a series of interdisciplinary seminars each semester with presentations by invited researchers from Switzerland and abroad who are experts in the life course and vulnerability issues, which is open to all researchers of the University of Geneva. It is organised by a group of 4 senior researchers (Dr. Myriam Girardin, Dr. Emilie Joly-Burra, Dr. Sascha Zuber, Dr. Mattia Vacchiano) in accordance with the director. In 2024, 4 international scholars have presented their work and participated in scientific exchanges with members of the LIVES Centre and of the University of Geneva (see [flyer](#)).

LIVES-CIGEV General Assembly and Welcome Day: At the beginning of the fall semester, the LIVES Centre at University of Geneva and the CIGEV invite all members based at the University of Geneva or affiliated to participate in the General Assembly. An invited international scholar gives a keynote lecture, followed by a festive event (see [2024 event](#)).

Life after LIVES: Alumni projects and careers in and outside academia: In 2024, the LIVES Centre launched a new [event](#) aiming to bring together past and present LIVES researchers, whether they are still in academia or elsewhere and exchange on their current projects. It was organised at the University of Lausanne in June 2024, and 70 current and past researchers of LIVES participated in the event.

Support: Beyond the aforementioned events, LIVES at the University of Geneva actively supported its members' scientific initiatives in 2024 by providing data and web expertise, communication support, science-to-society event organisation support using budgetary surpluses from the NCCR. LIVES at the University of Geneva also provided administrative and logistical assistance for the projects located at CIGEV.

4.3. Training in life course and vulnerability research

Doctoral Programme: The LIVES Centre holds a state-of-the-art doctoral programme intended for early-stage doctoral students in the social sciences, psychology, health sciences or related disciplines whose thesis includes a life course / lifespan perspective. While communication and science to society programs are run by officers based at the university of Lausanne, headed by the LIVES director at the University of Lausanne, the doctoral programme is run by an officer at the University of Geneva and headed by the LIVES director at the University of Geneva.

The LIVES doctoral programme, initiated in 2012 as part of the NCCR-LIVES, was extensively revised following the conclusion of the NCCR in 2023. A call for a new cohort is launched every year and the LIVES Doctoral Committee evaluates the applications based on their relevance for life course or lifespan research. The LIVES Doctoral Committee is composed by the two directors of the Centre, the scientific officer in charge of the doctoral programme and seven more members from both Universities (Prof. Matthias Kliegel, Prof. Matthias Studer, Prof. Eric Widmer, Prof. Leen Vandecasteele, Dr. Myriam Girardin, Dr. Nicolas Sommet and one designated PhD student). The 2024-26 cohort includes 16 doctoral students, with 7 from the University of Lausanne, 4 from the University of Geneva, and 5 from other institutions (4 international PhD students from France, Hungary, and the UK). Their research projects incorporate a life course perspective within fields such as sociology, demography, psychology, health sciences, and related disciplines.

The [updated two-year programme](#) comprises four theoretical modules, three methodological modules, and annual presentations of participants' research projects. Students are required to

attend at least five out of the seven modules. Each module is organised as a three-days, in-person workshop, corresponding to 1.5 ECTS, and upon request, a certificate of attendance can be issued. LIVES researchers organise and teach the modules, inviting in addition international experts for specific topics. The modules have a strong focus on theoretical and methodological bases of life course research and provide relevant methodological applications. At the end of each module the participating PhD students evaluate it and provide feedback. These assessments are then compiled and taken into consideration when planning and designing new doctoral modules each year. The LIVES Centre allocates its budget to cover transportation expenses as well as meals and refreshments for all participants. For international students, the LIVES Centre provides financial support for transportation and lodging for 5 out of 7 modules up to 400 FCH per module. A learning agreement is signed between the doctoral student, their thesis supervisor and the LIVES director at the beginning of the programme, establishing the rules for participating in the doctoral programme.

4.4. Communication with the wider public, practitioners and policy makers

Newsletters: The LIVES Centre's communication officer (financed by the University of Lausanne) publishes two [newsletters](#) quarterly. The external newsletter highlights new research projects, publications, and other scientific activities. It is distributed in French, German, or English to a database of 3,500 contacts, including researchers, practitioners, and policymakers in Switzerland and abroad. The internal newsletter, available in English, keeps LIVES members informed about ongoing research projects and activities within the Centre.

Workshops for Non-Academic Audiences: A new initiative regarding non-academic audiences was further developed in 2024, namely the collaboration with the ColLaboratoire of the University of Lausanne, an entity that promotes the dissemination of the scientific knowledge to non-academic audiences. Furthermore, the LIVES Centre continued to facilitate [Kalendaro](#) workshops in schools in canton de Vaud to introduce and discuss the potential of a life course approach with younger generations.

Publications for non-academic audiences: The LIVES Centre produces policy briefs under the [LIVES Impact](#) series, which are translated into French, English, and German and distributed through its broader network. Additionally, in collaboration with FORS, it publishes [Social Change in Switzerland](#), a series aimed at documenting the evolution of Switzerland's social structure for a general audience.

Partnerships: The LIVES Centre at the University of Geneva supports the knowledge transfer activities of its member with financial support, expertise and logistics. For example, in 2024, the LIVES Centre at the University of Geneva was a partner in the organization of the [public conference](#) "Vieillir en lien: Familles, amis, voisins, vie associative et institutions" in Geneva.

Online Communication: The LIVES Centre's website showcases our activities, projects, events, publications, and research outcomes in a format that is accessible to both researchers and the general public. Updates on activities and research findings are also shared via social media platforms, including LinkedIn, X, and Facebook.

Media Communication: The LIVES communication officer regularly drafts press releases and provides support to members through media workshops and tailored advice. Our researchers frequently engage with the media, as highlighted in our [press review](#).

5. Overall assessment

5.1. Qualitative indicators

Consolidation of an Expertise Hub in Interdisciplinary Life Course and Vulnerability Research at the University of Geneva: Through its numerous initiatives and events, the LIVES Centre plays a vital role in fostering an interdisciplinary culture at the University of Geneva. This interdisciplinarity culture promotes innovative collaborations among LIVES researchers from diverse fields, such as the “[Turbulent times: Personal Networks and Social Identities of Swiss Young Adults](#)” led by Eric Widmer (University of Geneva, sociologist) and Christian Staerkl (University of Lausanne, psychologist) funded in 2024.

Building an Interdisciplinary, Interinstitutional, and International Network in Life Course and Vulnerability Research: The research and activities of LIVES at the University of Geneva are founded on collaborations with numerous institutions, including the CIR-LIVES at the University of Lausanne (home to the other branch of the LIVES Centre), FORS, HES-SO, the Society for Longitudinal and Life Course Studies (SLLS), the Leading House for Governance in Vocational and Professional Education and Training (GOVPET), the National Centre of Competence in Research on Migration and Mobility (NCCR On the Move), among others. The Visiting Scholars initiative facilitates regular exchanges with international guests, while our alumni network, established over the past 13 years and comprising 462 members, spans a wide range of disciplines, countries, and professional fields.

Training and Supporting the Next Generation of Life Course and Vulnerability Researchers: With over 120 PhD graduates to date, the LIVES doctoral programme has played a pivotal role in advancing the theoretical and methodological expertise of emerging researchers in life course and vulnerability studies at the University of Geneva and beyond. Our dedication to fostering the careers of talented scholars is further demonstrated by the three grants awarded to doctoral and postdoctoral candidates in 2024, as well as our ongoing efforts to cultivate a supportive and dynamic research environment.

Commitment to Knowledge Transfer and Civil Society Partnerships Aligned with University of Geneva’s Values of international openness, respect for human rights, sensitivity to diverse cultures, ethics, humanism, and the tradition of scientific research: Building on the legacy of the NCCR LIVES, the LIVES Centre serves as a hub for fostering exchanges with civil society, developing partnerships with professionals, and bridging the gap between arts and science. The LIVES’s focus on understanding the emergence of vulnerability throughout the life course aligns closely with University of Geneva’s mission to promote a fairer, more equitable, and inclusive society. The expertise of LIVES researchers is particularly valuable in addressing critical issues such as gender equality, social policies, labour market integration, ageing, and social cohesion.

5.2. Quantitative indicators

	2023	2024
Members (LIVES-UNIGE)	58	63
Associated projects (LIVES-UNIGE)	16	12
Associated projects’ financial volume (LIVES-UNIGE)	9,5 mio	7,8 mio
Working groups (LIVES-UNIGE)	4	3
Visiting scholars (LIVES-UNIGE)	1	3
Scientific publications (LIVES-UNIGE)	61	50
Working papers (LIVES Centre)	4	5
Events (LIVES Centre)	36	37

Participants LIVES International Conference (LIVES Centre)	165	120
Participants in the doctoral programme (LIVES Centre)	20	34
Media interventions (LIVES Centre)	34	21
LIVES Impact (LIVES Centre & HES-SO)	0	2
Social change in Switzerland (LIVES Centre & FORS)	4	4

The number of scientific publications is estimated based on those tagged with the LIVES label in the University of Geneva and in the University of Lausanne's online repositories. Events include all activities that were organized or sponsored and promoted through the Centre's online agenda. Media interventions were tracked using the Centre's press review. All articles from LIVES Impact and Social Change in Switzerland are accessible on our website.

6. Conclusions

Over its 12 years as an NCCR, the LIVES Centre has established itself as a leading international hub for research on the life course and vulnerability. This success has been made possible through generous funding from the SNSF and strong support from both the Universities of Geneva and Lausanne. Building on this legacy, we aim in 2025 to advance cutting-edge research, support large interdisciplinary projects, train the next generation of researchers, facilitate knowledge exchange with the public, and, importantly, foster a collaborative and supportive working environment that colleagues value.

Moving towards this direction the Centre aimed in 2024 at further developing new top-down projects to which researchers affiliated with the LIVES Centre can contribute and participate, following the recommendations of the Advisory Board. At the University of Geneva, the LIVES Centre in 2024 and CIGEV managed to move towards a more stable administrative environment and to carve out staff time for the management of LIVES at the University of Geneva.

In 2025, Following feed-back from the Advisory committee, we plan to organize more thematically narrow research days involving invited international experts, instead of rather large annual international conference. Also in 2025, the Centre will focus on strengthening the interface between scientific research and societal engagement, emphasizing the dissemination of knowledge as a public good to address contemporary challenges. It plans to use the established outreach tools, including publications tailored to the general public, such as LIVES Impact and Social Change in Switzerland, as well as new initiatives, such as the collaboration with the Collaboratoire at the University of Lausanne.

List of Appendices

Appendix A – Associated projects 2024

Appendix B – Financial situation LIVES UNIGE 2024

Appendix C – Working groups 2024

Appendix D – Publications list of LIVES UNIGE members with LIVES tag for 2024 (exported from Archives Ouvertes)

Title	LIVES Institution	Institutions	Start date	End date	Project Leaders	Researchers	Funding source	Funding Total
The Empty Office: An International Study of Teleworking	Unige LIVES		01.01.2024	31.12.2025	Vacchiano Mattia	Mattia Vacchiano; Eric Widmer; Guillaume Fernandez; Melanie Arntz; Stephane Cullati; Stephanie Steinmetz; Koorosh Massoudi; Nicola Cianferoni; Manal Azzi; Najati Goshesh; Oscar Molina Romo; Sander Junte; Anne-Sophie Brandt	Swiss Network for International Study	295 000
Turbulent times: Personal Networks and Social Identities of Swiss Young Adults (IdNet)	Unige LIVES ; Unil LIVES	University of Geneva, University of Lausanne	01.10.2024	30.09.2028	Eric Widmer, Christian Staerklé		SNSF Encouragement de projets	775 014
APOE-related pathological cognitive development and cognitive reserve accumulation pathways: a detailed lifespan perspective	Unige LIVES	Univerity of Geneva	01.06.2024	31.05.2028	Andreas Ihle	Andreas Ihle, Sayonara Pereira da Silva, Charikleia Lampraki, Paolo Ghisletta, Matthias Kliegel, Jürgen Maurer, Matthias Studer, Elvio Rúbio Gouveia, Marcelo de Maio Nascimento	SNSF Enc	362 149
Metabolic and vascular risk as modifiers of the relationship between age-dependent changes in the brain and cognition	Unige LIVES		01.07.2023	30.06.2027	Paolo Ghisletta		FNS	266461

The practice of family law during the Covid-19 pandemic: digital justice and gender inequalities	Unige LIVES		01.04.2023	31.03.2026	Michelle Cottier, Gaëlle Aeby, Eric Widmer	Sabrina Roduit	FNS - PNR 80	406668
Fit for crisis? Social policy in times of Covid-19: a longitudinal mixed-method approach	Unige LIVES		01.04.2023	31.03.2026	Emilie Rosenstein, Matthias Studer, Nicolas Pons-Vignon, Aline Duvoisin		FNS - PNR 80	509822
FamiLEA : The Remaking of the Family in East Africa	Unige LIVES		01.06.2023	31.05.2027	Yvan Droz, Valérie Golaz, Clémentine Rossier		FNS - Sinergia	2986857
Societal Crises and Personal Sense-Making: Transitions, Mobility, and Imagination Across the Lifecourse	Unige LIVES		01.06.2022	31.05.2026	Zittoun Tania, Gillespie Alex, Nathalie Muller Mirza	Gillespie Alex, Nathalie Muller Mirza, Oliver Pedersen, Maeva Perrin	NCCR On the Move	

Strengthening Sequence Analysis	Unige LIVES		01.02.2022	28.02.2026	Matthias Studer (matthias.studer@unige.ch)	Léonhard Unterlerchner (employé sur le projet, unige), Kevin Emery (Unil), Léonard Roth (unisanté), Rojin Sadeghi (unige)	FNS Division 1	454776
Age-INT - Expertise internationale pour la vie des personnes âgées	Unige LIVES		01.01.2021	31.12.2024	Konstantas Dimitri, Wac Katarzyna, Kliegel Matthias	Igor Matias, Melanie Mack	Confédération Suisse - Département SEFRI	700.000 (Geneva); 3.5 Mio (total)
Healthy Ageing in the Face of Death: Preferences, Communication, Knowledge and Behaviors Regarding End of Life and End-of-life Planning Among Older Adults in Switzerland	Unige LIVES		01.01.2021	29.02.2024	Maurer Jürgen	Clément Meier, Sarah Vilpert	FNS Division I	420340
The participatory capability of children in street situations in Brazil and China	Unige LIVES		01.01.2019	30.06.2024	Daniel Stoecklin	Quentin Fayet, André Cardozo Sarli	FNS Division I	643666

SITUATION FINANCIÈRE PRÉLIMINAIRE* DES FONDS LIVES - 2024



BUDGET de fonctionnement du Centre LIVES UNIGE (DIP LIVES) et reliquats CASH LIVES et IN KIND LIVES

Année	2024		
	CASH LIVES	IN KIND LIVES	DIP LIVES
1. Office		27 297	1 159
Admin Personnel		27 248	
Consumables		48	136
Meetings Admin / Bureau			1 024
2. ProDoc	3 491		4 524
ProDoc Modules	3 491		4 524
3. Science-Society			1 906
Support to research			511
Science-Society Events			1 395
5. Scientific	256 020	8 332	51 310
Support to research	71 224	8 332	8 519
Advisory Board			3 535
Seeds	11 577		
CIL 2024			23 947
Visitor grants	9 889		
LIVES Day			3 482
Postdoc	117 722		
Welcome Day - AG CIGEV LIVES			1 182
LIVES UNIGE Seminars	313		940
Writing retreat			9 000
Young Scholar grants	45 296		705
Grand Total	259 511	35 628	58 898
BUDGET 2024	259 556	43 260	60 043
Solde	44	7 632	1 145

* Les chiffres sont donnés sous réserve de validation de la clôture de l'exercice 2024 par le service comptable de l'Université de Genève.

Appendix C – Working Groups 2024

- LiveZ – transitions to adulthood of Generation Z

Coordinator: Mattia Vacchiano, mattia.vacchiano@unige.ch (LIVES UNIGE)

In the difficult post-pandemic context, the generation Z cohort now straddles adolescence, entry into education and access to the labour market. Their journey to adulthood is beginning and a field of research for years to come.

- Ageing and Reserves

Coordinators: Matthias Kliegel, Matthias.kliegel@unige.ch (LIVES UNIGE); Jürgen Maurer, jurgen.maurer@unil.ch (LIVES UNIL)

The working group will continue the research activities of [former IP3 \(ageing\)](#) of the NCCR LIVES focusing on the life course pathways of resilience and vulnerability in and into old age. It will address the questions of how multi domain reserves develop across the lifespan, how stress affects health across the lifespan and how interventions can help to overcome vulnerability and foster resilience. The working group will apply a multidisciplinary approach in terms of conceptual models and methodology.

- Lifespan dynamics

Coordinator: Andreas Ihle (andreas.ihle@unige.ch)

The working group will continue key research activities of former [CCI3 \(cumulative \(dis-\)advantages\)](#) and [CCI4 \(methodological advances\)](#) of the NCCR LIVES to address the dynamic and multi-directional development of vulnerability and resilience across the lifespan in multiple domains of human functioning (including cognition, health, well-being, and activity engagement). Specifically, we will investigate the dynamic interplay across the lifespan of developmental spheres (including resources, reserves, risks, life events, transitions, surrounding contexts, etc.). Thereby, we will adopt multi-disciplinary approaches applying a variety of sophisticated methods.

- Aschwanden, D., Allemand, M., Kliegel, M., Sutin, A. R., Luchetti, M., Stephan, Y., Schilling, O., Wahl, H.-W., Olaru, G., & Terracciano, A. (2024). Longitudinal associations between personality traits and cognitive complaints in midlife and older age across 20 years. *European Journal of Personality*, 08902070241272247.
<https://doi.org/10.1177/08902070241272247>
- Bächli, M., Benghalem, H., Tinello, D., Aschwanden, D., Zuber, S., Kliegel, M., Pellizzari, M., & Lalive, R. (2024). Ranking occupations by their proximity to workers' profiles. *Swiss Journal of Economics and Statistics*, 160(1), 8. <https://doi.org/10.1186/s41937-024-00125-2>
- Bonvin, J.-M., & Laruffa, F. (2024). Transforming Social Policies and Institutions in a Capability Perspective : Agency, Voice and the Capability to Aspire. *Journal of Human Development and Capabilities*, 25(4), 575-594.
<https://doi.org/10.1080/19452829.2024.2405096>
- Bonvin, J.-M., & Zimmermann, B. (2024). Capability to Aspire and Transformative Institutions : An Introduction. *Journal of Human Development and Capabilities*, 0(0), 1-9.
<https://doi.org/10.1080/19452829.2024.2409782>
- Burton-Jeangros, C., Jackson, Y., Racapé, J., Raynault, M.-F., & Rea, A. (2024a). *Les inégalités sociales et de santé—Gestion de la crise de la Covid-19 à Bruxelles, Genève et Montréal Première édition* (Monographie). Editions de l'Université de Bruxelles.
<https://www.editions-ulb.be/fr/book/?GCOI=74530100067370#h2tabtableContents>
- Burton-Jeangros, C., Jackson, Y., Racapé, J., Raynault, M.-F., & Rea, A. (2024b). Politiques sociales et inégalités face à la pandémie : Enjeux, paradoxes, défis. In *Les inégalités sociales et de santé : Gestion de la crise de la Covid-19 à Bruxelles* (p. 55-72). Éditions de l'Université de Bruxelles.

<https://www.hetsl.ch/laress/publications/detail/publication/politiques-sociales-et-inegalites-face-a-la-pandemie-enjeux-paradoxes-defis>

Cantoni, E., Jacot, N., & Ghisletta, P. (2024). Review and comparison of measures of explained variation and model selection in linear mixed-effects models. *Econometrics and Statistics*, 29, 150-168. <https://doi.org/10.1016/j.ecosta.2021.05.005>

Card, D., Colella, F., & Lalive, R. (2024). Gender Preferences in Job Vacancies and Workplace Gender Diversity. *The Review of Economic Studies*, rdae085. <https://doi.org/10.1093/restud/rdae085>

Carlstrom, S., Waltz, O. A. W., & Rossier, C. (2024). *Les politiques familiales dans le canton de Genève : Analyse dans une perspective du parcours de vie*. Institut de recherches sociologiques, SDS. <https://www.unige.ch/sciences-societe/socio/fr/publications/dernierespublications/sociograph-66-sociological-research-studies/>

Consoli, L. (2024). The Capability to Aspire and Realise Aspirations After Exiting Long-lasting Undocumentedness. *Journal of Human Development and Capabilities*, 1-23. <https://doi.org/10.1080/19452829.2024.2407375>

Consoli, L., Burton-Jeangros, C., & Jackson, Y.-L. J. (2024). *A Dynamic Understanding of the Vulnerability of Formerly Illegalized Migrant Workers in Relation to Legal Status Stratification*. 22. <https://archive-ouverte.unige.ch/unige:180293>

Cullati, S., Sieber, S., Gabriel, R., Studer, M., Chiolero, A., & van der Linden, B. W. A. (2024). Lifetime employment trajectories and cancer. *Scientific Reports*, 14(1), 20224. <https://doi.org/10.1038/s41598-024-70909-2>

D'Aloia, G. (2024, avril 18). Travailleurs sans-papiers : La régularisation améliore la sécurité sociale. *Soziale Sicherheit CHSS*. <https://sozialesicherheit.ch/fr/travailleurs-sans-papiers->

la-regularisation-ameliore-la-securite-sociale/

De Maio Nascimento, M., Ihle, A., Gouveia, É. R., & Marques, A. (2024). Dynamic associations between frailty and cognition over 4 years : A population-based study on adults aged ≥ 50 from 12 European countries. *Journal of Affective Disorders*, 354, 536-543.

<https://doi.org/10.1016/j.jad.2024.03.049>

De Maio Nascimento, M., Lampraki, C., Marques, A., Gouveia, É. R., Adsuar, J. C., & Ihle, A. (2024). Longitudinal cross-lagged analysis of depression, loneliness, and quality of life in 12 European countries. *BMC Public Health*, 24(1), 1986. <https://doi.org/10.1186/s12889-024-19463-0>

de Maio Nascimento, M., Marques, A., Gouveia, É. R., & Ihle, A. (2024). Exploring sex differences regarding the mediation of the relationship between depression and quality of life via moderate and vigorous physical activity in old age : A longitudinal study. *Journal of Affective Disorders*, 347, 156-162. <https://doi.org/10.1016/j.jad.2023.11.065>

Duthé, G., Dasré, A., Dieme, B. N., Masquelier, B., Pilon, M., Rossier, C., Soura, A. B., Pambè, M. W., & Marcoux, R. (2024). *Promouvoir et confronter les sources statistiques existantes pour répondre aux enjeux démographiques en Afrique subsaharienne*. Presses de l'Université du Québec. <https://doi.org/10.1515/9782760560550>

Dydek, J., Bliźniak, K., Sarmiento, H., Ihle, A., Gouveia, É. R., Iskra, J., & Przednowek, K. (2024). Characteristics of Changes in Contractile Properties of Muscle after Anaerobic Exercise. *Applied Sciences*, 14(7), 3078. <https://doi.org/10.3390/app14073078>

França, C., Ashraf, S., Santos, F., Dionísio, M., Ihle, A., Marques, A., de Maio Nascimento, M., & Gouveia, É. R. (2024). Estimated Energy Expenditure in Youth While Playing Active Video Games : A Systematic Review. *Sports*, 12(2), Article 2.

<https://doi.org/10.3390/sports12020039>

- França, C., Gouveia, É. R., Martins, F., Ihle, A., Henriques, R., Marques, A., Sarmiento, H., Przednowek, K., & Lopes, H. (2024). Lower-Body Power, Body Composition, Speed, and Agility Performance among Youth Soccer Players. *Sports*, 12(5), 135.
<https://doi.org/10.3390/sports12050135>
- França, C., Martins, F., Przednowek, K., Marques, A., Ihle, A., Sarmiento, H., & Gouveia, É. R. (2024). Knee and Hip Muscle Strength of Male Soccer Players from Different Competitive Levels. *Journal of Human Kinetics*, 17-27.
<https://doi.org/10.5114/jhk/185217>
- Ghisletta, P. (2024). On some challenges of psychological research in late adulthood and aging. *Current Opinion in Psychology*, 55, 101745.
<https://doi.org/10.1016/j.copsyc.2023.101745>
- Girardin, M., Widmer, E., Ganjour, O., Zufferey, M.-E., De Bel, V., Huri, S., & Tettamanti, M. (2024). *Une refamiliarisation du social dans la crise sanitaire de COVID-19 ? Éléments d'interprétation issus d'une revue de presse de mars à juin 2020 dans plusieurs pays européens* (Sociological Research Studies, Vol. 65). Université de Genève.
<https://www.unige.ch/sciences-societe/socio/fr/publications/dernierespublications/sociograph-65-sociological-research-studies/>
- Gomez-Magdaraog, K. M., Burton-Jeangros, C., & Jackson, Y. (2024). Socio-economic impact of the COVID-19 pandemic on Overseas Filipino Workers and their left-behind families : A scoping review. *Frontiers in Political Science*, 6.
<https://doi.org/10.3389/fpos.2024.1320021>
- Jolidon, V., De Prez, V., Bracke, P., Cullati, S., & Burton-Jeangros, C. (2024). Lack of social support, gender and colorectal cancer screening participation across Europe : How do

screening programmes mitigate the effect of social support for men and women?

Sociology of Health & Illness, 46(6), 1212-1237. <https://doi.org/10.1111/1467->

9566.13791

Joly-Burra, E., Haas, M., Laera, G., Ghisletta, P., Kliegel, M., & Zuber, S. (2024). From attentional fluctuations to intentional fluctuations? Monitoring behavior and intraindividual variability in time-based prospective memory. *Journal of Experimental Psychology: Learning, Memory, and Cognition*. <https://doi.org/10.1037/xlm0001344>

Lenko, M., Refle, J.-E., Burton-Jeangros, C., Fakhoury, J., Consoli, L., & Jackson, Y. (2024). Migrant Work Conditions and Health Status—A Longitudinal Study on ‘Dirty Work’ Among Undocumented and Newly Regularized Workers. *Journal of International Migration and Integration*. <https://doi.org/10.1007/s12134-024-01182-5>

Mahmoud, M., & Muller-Mirza, N. (2024). L’activité des médiatrices interculturelles en contexte médical : Un rempart aux injustices épistémiques ? *Éducation et socialisation. Les Cahiers du CERFEE*, 71, Article 71. <https://doi.org/10.4000/edso.26930>

Mann, F. D., Cuevas, A. G., Clouston, S. A. P., Freilich, C. D., Krizan, Z., Zuber, S., Wänström, L., Muniz-Terrera, G., O’Keefe, P., Voll, S., Hofer, S., Rodgers, J. L., & Krueger, R. F. (2024). A novel approach to model cumulative stress : Area under the s-factor curve. *Social Science & Medicine*, 348, 116787. <https://doi.org/10.1016/j.socscimed.2024.116787>

Martins, F., França, C., Sarmiento, H., Henriques, R., Przednowek, K., Nascimento, M. de M., Marques, A., Ihle, A., & Gouveia, É. R. (2024). Lower limbs strength variations between injured and non-injured professional soccer players. *Science Progress*, 107(1), 00368504231216312. <https://doi.org/10.1177/00368504231216312>

Matias, I., Kliegel, M., & Wac, K. (2024). Providemus alz : Ubiquitous Screening of Preclinical

Alzheimer's Disease with Consumer-grade Technologies. *Companion of the 2024 on ACM International Joint Conference on Pervasive and Ubiquitous Computing*, 743-751.
<https://doi.org/10.1145/3675094.3678425>

Muller Mirza, N. (2024). Scopus preview—Scopus—Document details—Argumentation and reasoning in people older than 65. A sociocultural and dialogical analysis of focus groups on senior volunteering. In *The Psychology of Argumentation and Reasoning* (p. 211-237). Nova Publishers. <https://www.scopus.com/record/display.uri?eid=2-s2.0-85205588592&origin=inward&txGid=56fc127eee37f60236e62890a30cb1d4>

Nascimento, M. de M., Marques, A., Gouveia, É. R., Marconcin, P., Peralta, M., & Ihle, A. (2024). The Longitudinal Association between Multiple Frailty Criteria and Depressive Symptomatology Five Years Later in Older Adults : A Decision Tree Modelling Approach. *Journal of Clinical Medicine*, 13(6), 1697.
<https://doi.org/10.3390/jcm13061697>

Oris, M., Mazzoni, S., & Ramiro-Fariñas, D. (2024). Did the 1917–21 economic depression accelerate the epidemiological transition? Milk prices, summer peak of mortality, and food-and-water causes of death in Madrid, Spain. *Explorations in Economic History*, 94, 101613. <https://doi.org/10.1016/j.eeh.2024.101613>

Ouedraogo, R., Wanjiru, S., Zan, M. L., Rossier, C., Owolabi, O., Athero, S., Oduor, C., Bangha, M., & the N-MAS team. (2024). “I always know she cannot betray me.” Disclosure of abortion and methods of abortion used in informal settlements in Nairobi, Kenya. *PLOS Global Public Health*, 4(7), e0003252. <https://doi.org/10.1371/journal.pgph.0003252>

Owolabi, O. O., Rossier, C., Compaore, R., Kim, C., Ganatra, B., Ouedraogo, R., Zan, M., Bangha, M., Baguiya, A., & Team, the N.-M. (s. d.). Searching for Needles in a Haystack : Exploring Alternative Operational Approaches to Classify the Safety of

- Induced Abortions Using Respondent-Driven Sampling Data From Two Sub-Saharan African Settings. *Studies in Family Planning*, n/a(n/a). <https://doi.org/10.1111/sifp.12276>
- Refle, J.-E. (2024). Gumuscu, Sebnem. 2023. Democracy or Authoritarianism : Islamist Governments in Turkey, Egypt, and Tunisia. *Zeitschrift Für Vergleichende Politikwissenschaft*. <https://doi.org/10.1007/s12286-024-00615-w>
- Refle, J.-E., Burton-Jeangros, C., Jackson, Y., Consoli, L., & Fakhoury, J. (2024). *Becoming Visible—The Effect of Regularization on Undocumented Workers*. Épistémé - EPFL. <https://www.epflpress.org/produit/1524/9782832322765/becoming-visible>
- Refle, J.-E., Burton-Jeangros, C., & Jackson, Y.-L. J. (2024). *Sortir de la clandestinité : Les conséquences de la régularisation des travailleurs sans papiers* (EPFL PRESS). Épistémé. <https://www.epflpress.org/produit/1479/9782889155422/sortir-de-la-clandestinite>
- Roduit, S. (2024). *Accès aux soins et tri médical. Trajectoires de personnes sans assurance-maladie en Suisse*. Editions Seismo. <https://doi.org/10.33058/seismo.20766>
- Rossier, C. (2024). Avortement : Un accès sous contraintes. In *Atlas mondial des femmes. Un recul des inégalités ?* (p. 20). Autrement. <https://archive-ouverte.unige.ch/unige:181086>
- Saqr, M., López-Pernas, S., Helske, S., Durand, M., Murphy, K., Studer, M., & Ritschard, G. (2024). Sequence Analysis in Education : Principles, Technique, and Tutorial with R. In *Learning Analytics Methods and Tutorials* (p. 321). Springer Nature Switzerland. https://doi.org/10.1007/978-3-031-54464-4_10
- Su, X., Yang, T., Zuber, S., Li, S., Yuan, R., Yuan, C., Yang, H., Wang, Y., & Chan, R. C. K. (2024). Event-, time- and activity-based prospective memory in children with higher autistic traits. *Research in Autism Spectrum Disorders*, 118, 102498. <https://doi.org/10.1016/j.rasd.2024.102498>

Tenorio-Mucha, J., Jeffries-Tolksdorf, C., Burton-Jeangros, C., Refle, J.-E., & Jackson, Y.

(2024). Social determinants of the healthcare needs of undocumented migrants living with non-communicable diseases : A scoping review. *BMJ Public Health*, 2(1), e000810.

<https://doi.org/10.1136/bmjph-2023-000810>

Wieczorek, M., Kliegel, M., Beard, J., Guillemin, F., Avendano, M., & Maurer, J. (2024). Can

ChatGPT Provide Useful Guidance to Assess the Current State of and Future Priorities for Aging Research in the Social Sciences? *Journal of Aging & Social Policy*, 0(0), 1-16.

<https://doi.org/10.1080/08959420.2024.2422669>

Zan, L. M., Owolabi, O., Baguiya, A., Ouedraogo, R., Bangha, M., Kim, C., & Rossier, C.

(2024). Using Respondent-Driven Sampling to measure abortion safety in restrictive contexts : Results from Kaya (Burkina Faso) and Nairobi (Kenya). *Demographic Research*, 50, 1387-1422.

<https://doi.org/10.4054/DemRes.2024.50.47>

Zan, L. M., & Rossier, C. (2024a). From theories of contraceptive use to human rights

principles : Implications for indicators on the supply and demand side. *Contraception and Reproductive Medicine*, 9(1). <https://doi.org/10.1186/s40834-024-00314-7>

Zan, L. M., & Rossier, C. (2024b). Psychosocial dimensions of access and their association with contraceptive use and intention to use. *BMC Women's Health*, 24(1), 2.

<https://doi.org/10.1186/s12905-023-02841-y>

Zan, M. L., Sauvain-Dugerdil, C., & Rossier, C. (2024). Using Modern Contraception While

Wanting a Child : What Does Contraceptive Over-Use Mean for the Human Rights-Based Approach in Burkina Faso? Insights from PMA2020 Data. *Social Sciences*, 13(9), 447.

<https://doi.org/10.3390/socsci13090447>

Zuber, S., Scarampi, C., Laera, G., & Kliegel, M. (2024). Remembering future intentions : Recent advancements in event- and time-based prospective memory. In *Reference Module in*

Neuroscience and Biobehavioral Psychology. Elsevier. <https://doi.org/10.1016/B978-0-443-15754-7.00023-7>