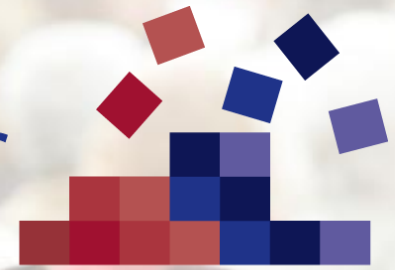


VIVRE
LEBEN
VIVERE

LIVES



Swiss National Centre of Competence in Research

Overcoming vulnerability:
life course perspectives

Surveying the Elderly in Switzerland

Eduardo Guichard¹, Marthe Nicolet¹, Christophe Monnot^{1/2},
Dominique Joye², Michel Oris¹

¹University of Geneva and ²University of Lausanne



SWISS NATIONAL SCIENCE FOUNDATION

The National Centres of Competence in Research (NCCR) are a
research instrument of the Swiss National Science Foundation

Unil
UNIL | Université de Lausanne



UNIVERSITÉ
DE GENÈVE

Eduardo Guichard, Marthe Nicolet Christophe Monnot,
Dominique Joye, Michel Oris

with

Marie Baeriswyl, Jean-François Bickel, Claudio Bolzman,
Alessandra Canuto, Stefano Cavalli, Christine Cedraschi,
Etienne Christe, Giorgia Codato, Nora Dasoki Dasoki, Charlotte
Den Hollander, Aline Duvoisin, Delphine Fagot, Rainer Gabriel,
Myriam Girardin, Julia Henke, François Herrmann, Cornelia
Hummel, Sarah Hutchinson, Laure Kaeser, Mathias Lerch,
Catherine Ludwig, Christophe Luthy, Barbara Masotti,
Amgalan Munkhdorj, Pasqualina Perrig-Chiello, Alessandra
Rosciano, Stephanie Spähni, Dario Spini, Aude Tholomier,
Angelica Torres-Florez, Laurie Tullen, Eric Widmer,
and maybe more...

1. VLV

1. Background & Overview VLV: Context 1

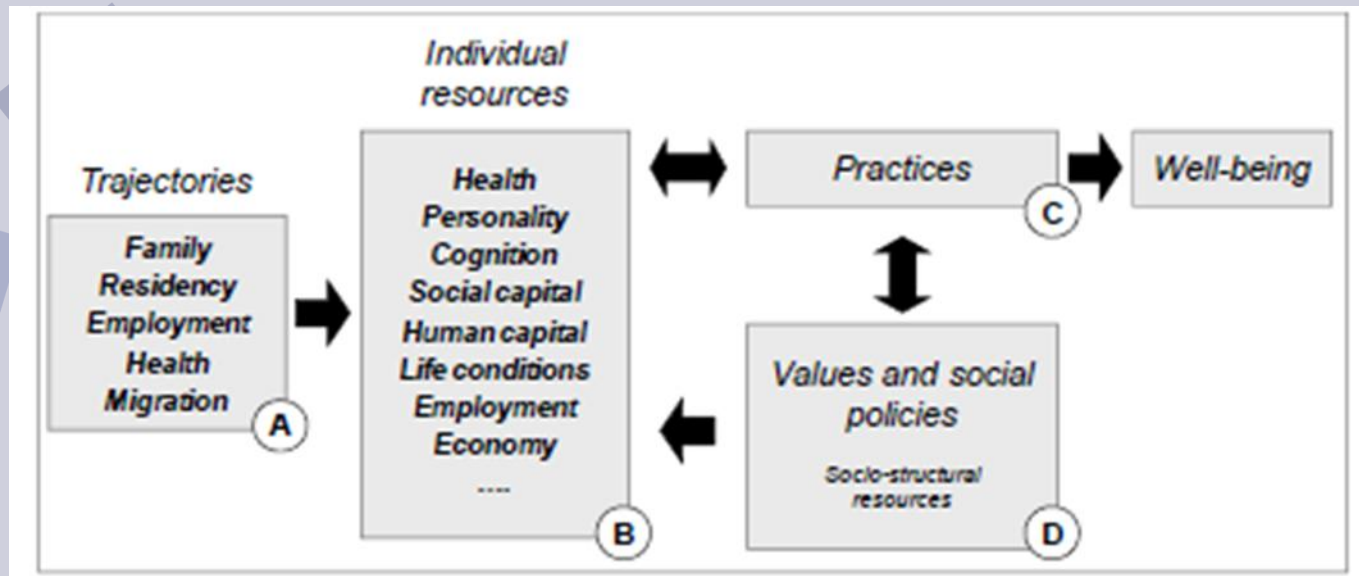
Growing number of older individuals: Need for an updated description of:

- living conditions
- differences in access and use of resources
- the impact of life trajectories on the constitution of resources

1. VLV

1. Background & Overview VLV: Objectives

Interdisciplinary approach: geriatrics, psychology, sociology, socioeconomics, social policy, demography

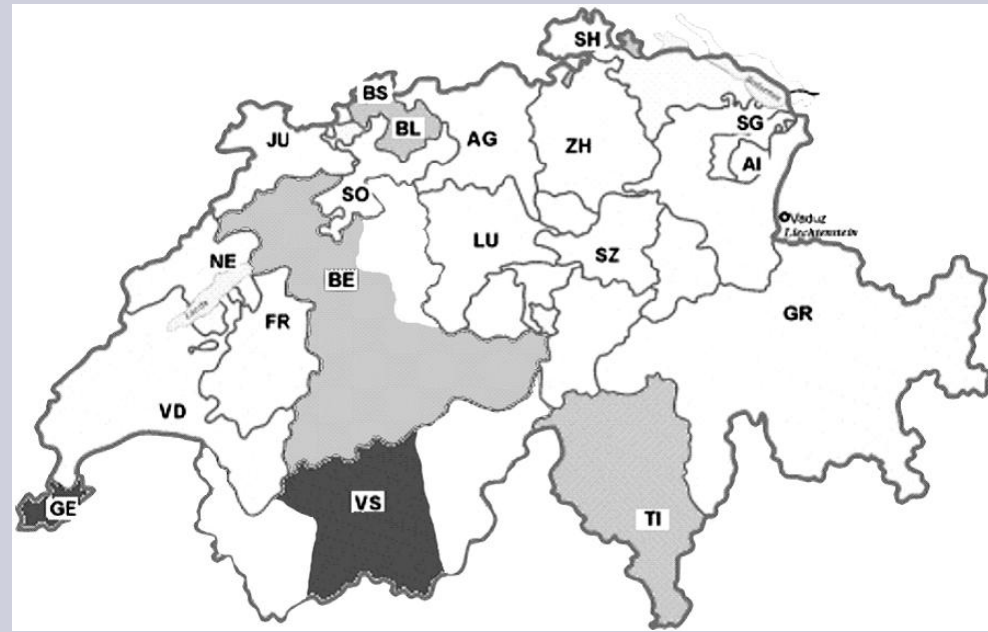


Aim 1: to study people, resources and life trajectories

1. VLV

1. Background & Overview VLV: Context 2

- Interdisciplinary survey on living and health conditions of people aged 65+
- 5 cantons: Geneva, Central Valais, Bern, Basel, Ticino
- Third wave of a cross-sectional survey (1979, 1994/5)

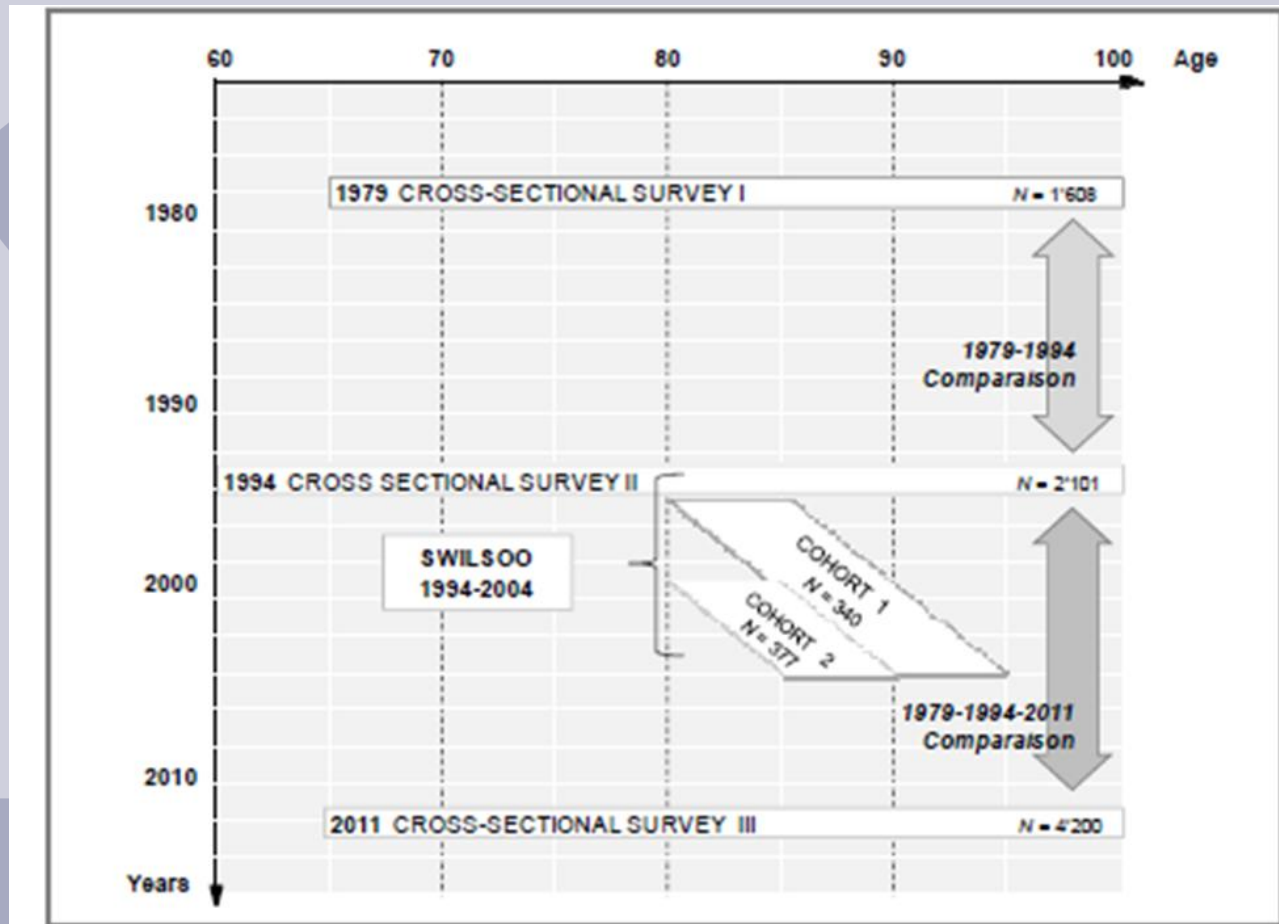


1. VLV

1. Background & Overview VLV: Objectives

Aim 2: comparison across time (1979 – 1994/5 – 2011/12) and space

- recent trends
- assessment of long-term trends



1. VLV

1. Background & Overview VLV: Method

Samples:

- 4200 respondents, randomly selected in administration's registers
- 3600 main sample, stratified by age and sex
- 100 partners (Linked – lives) only in Geneva
- 500 migrants from Italy, Spain, Portugal, (**Ex-Yugoslavia**) (in Basel and Geneva)

1. VLV

1. Background & Overview VLV: Questionnaires

Self administered questionnaire

- Contains 150 questions

Life event history calendar

Face to face questionnaire

- Contains 459 questions
- Filters adapt the questionnaire during the interview

Proxi questionnaire

- Contains 64 questions



Questionnaire I

Calendrier de vie

indépendances maintenant aux transitions que vous avez vécu(e)s toute votre vie.
 remplir ce calendrier sur la base de ce qui figure ci-dessous. Pour vous aider, consultez les exemples fournis.

Résidence
 Donner votre lieu de vie à la date de tout déménagement, en indiquant l'adresse complète et l'initiale du canton (le premier chiffre).

Famille/couple
 Donner les changements dans votre famille (rencontres et séparations; mariages et veuvages) et familiales (naissances d'enfants et décès de proches).

Activité
 Donner les changements dans votre carrière (formation; métiers et professions; études au foyer; chômage; arrêts de travail).

Taux
 Donner les activités rémunérées, indiquez les revenus nets et les importants de taux de travail.

Santé
 Donner les problèmes de santé rencontrés (accidents, maladies, hospitalisations, etc.).

Nationalité
 Donner votre/vos nationalité(s) à la date de tout changement de statut juridique (permis B, permis C, naturalisation, etc.).

pas de tabagisme 12214

Année	Age	Résidence	Famille / couple	Activité	Santé	Nationalité	Age	Année	
							Age	Année	
1938	0	Genève, GE				Suisse	0	1938	
1939	1						1	1939	
1940	2						2	1940	
1941	3						3	1941	
1942	4						4	1942	
1943	5						5	1943	
1944	6						6	1944	
1945	7			Ecole enfantine et primaire			7	1945	
1946	8						8	1946	
1947	9						9	1947	
1948	10					Sanatorium pendant un an à Crans-Montana et séjours en famille	10	1948	
1949	11						11	1949	
1950	12	Morges, VD/Genève	de ce couple des séparations parents	Préparation - internat catholique suisse			12	1950	
1951	13						13	1951	
1952	14						14	1952	
1953	15						15	1953	
1954	16						16	1954	
1955	17			Technicom en architecture			17	1955	
1956	18						18	1956	
1957	19						19	1957	
1958	20						20	1958	
1959	21			Architecte 100%			21	1959	
1960	22						22	1960	
1961	23			Rencontre Danièle			23	1961	
1962	24						24	1962	
1963	25	Morges, GE	Mariage Danièle				25	1963	
1964	26						26	1964	
1965	27						27	1965	
1966	28						28	1966	
1967	29			Naissance Aabria			29	1967	
1968	30						30	1968	
1969	31						31	1969	
1970	32						32	1970	
1971	33			Naissance Karine		Dépistage d'un diabète avec régime	33	1971	
1972	34	Morges, GE		Architecte en kenness			34	1972	
1973	35						35	1973	
1974	36						36	1974	
1975	37						37	1975	
1976	38						38	1976	
1977	39						39	1977	
1978	40			Architecte indépendant des			40	1978	
1979	41						41	1979	
1980	42						42	1980	
1981	43						43	1981	
1982	44						44	1982	
1983	45						45	1983	
1984	46						46	1984	
1985	47						47	1985	
1986	48						48	1986	
1987	49			Accident moto (compagnon Aabria)			49	1987	
1988	50						50	1988	
1989	51						51	1989	
1990	52						52	1990	
1991	53						53	1991	
1992	54						54	1992	
1993	55						55	1993	
1994	56						56	1994	
1995	57			fin activité courante		Embolie pulmonaire (1 semaine) suite à un voyage en avion	57	1995	
1996	58						58	1996	
1997	59						59	1997	
1998	60						60	1998	
1999	61			Décès mère			61	1999	
2000	62			Décès père			62	2000	
2001	63						63	2001	
2002	64						64	2002	
2003	65						65	2003	
2004	66			Ape AVS mais toujours en activité			66	2004	
2005	67						67	2005	
2006	68						68	2006	
2007	69						69	2007	
2008	70						70	2008	
2009	71					Rétinite gauche (2 jours)	71	2009	
2010	72						72	2010	
2011	73			toujours en activité des			73	2011	
Année	Age	Résidence	Famille / couple	Activité	Taux	Santé	Nationalité	Age	Année

1. VLV

1. Background & Overview VLV: Interviewers

Equipe enquêteurs VLV



2. From contact strategy to reasons of refusal

Various scenarios for various life situations

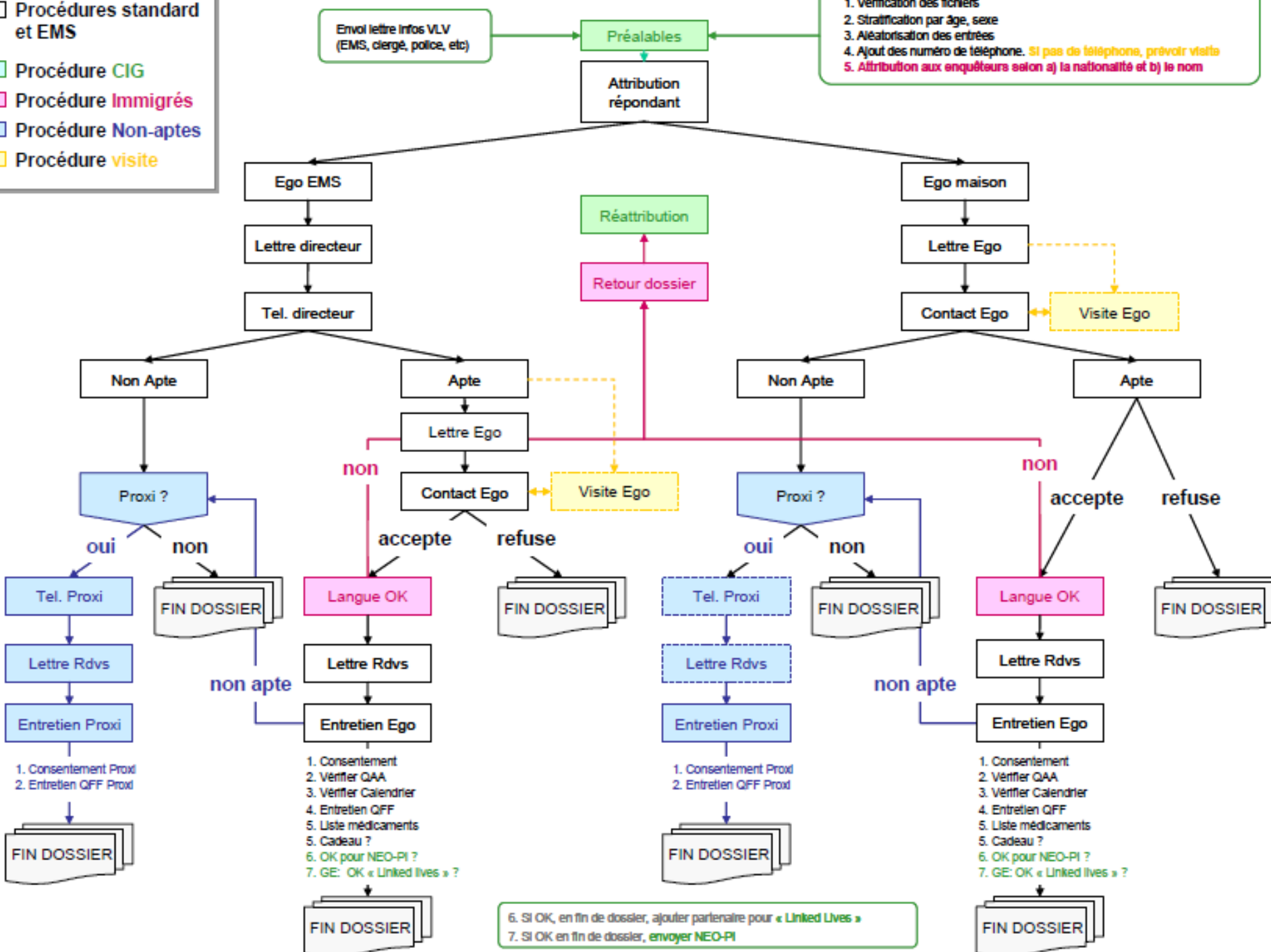
The procedures:

- Standard Procedure
- Elderly Home Procedure
- Proxi Procedure
- Visit Procedure
- Migrant Procedure

□ Procédures standard et EMS
■ Procédure CIG
■ Procédure Immigrés
■ Procédure Non-aptés
■ Procédure visite

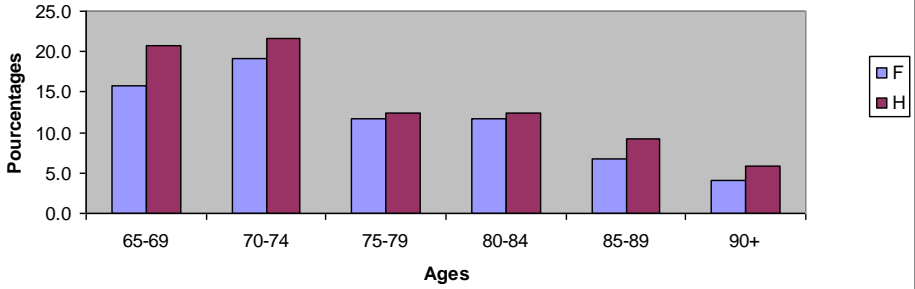
Envoi lettre Infos VLV (EMS, clergé, police, etc)

1. Vérification des fichiers
2. Stratification par âge, sexe
3. Aléatorisation des entrées
4. Ajout des numéros de téléphone. *Si pas de téléphone, prévoir visite*
5. Attribution aux enquêteurs selon a) la nationalité et b) le nom

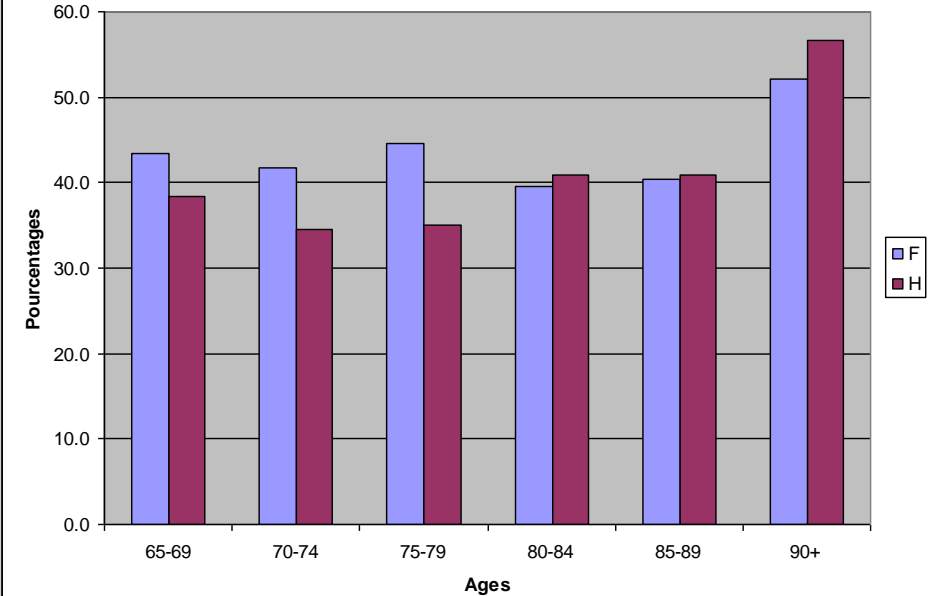


Proportions of sample members absent from the phone books, by age and sex

Genève



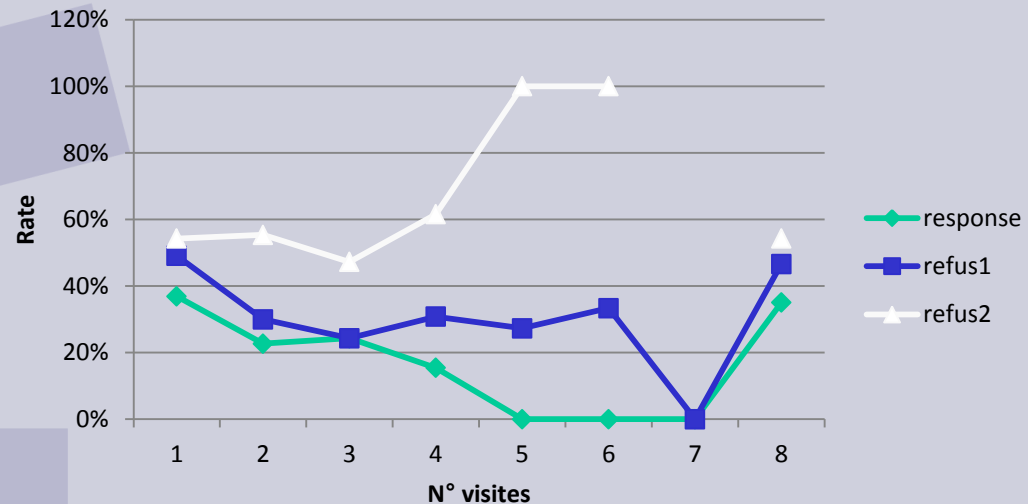
Valais



Efficacy of the visit procedure

Visits	Compleat		Decease		Partial		NR		Refusal	
	n	%	n	%	n	%	n	%	n	%
1	90	81%	2	40%	4	100%	182	76%	119	80%
2	17	15%	2	40%		0%	34	14%	17	11%
3	4	4%	1	20%		0%	13	5%	8	5%
4		0%		0%		0%	8	3%	3	2%
5		0%		0%		0%	2	1%	1	1%
6		0%		0%		0%	1	0%		0%
Total	111	100%	5	100%	4	100%	240	100%	148	100%

Rates visit procedure

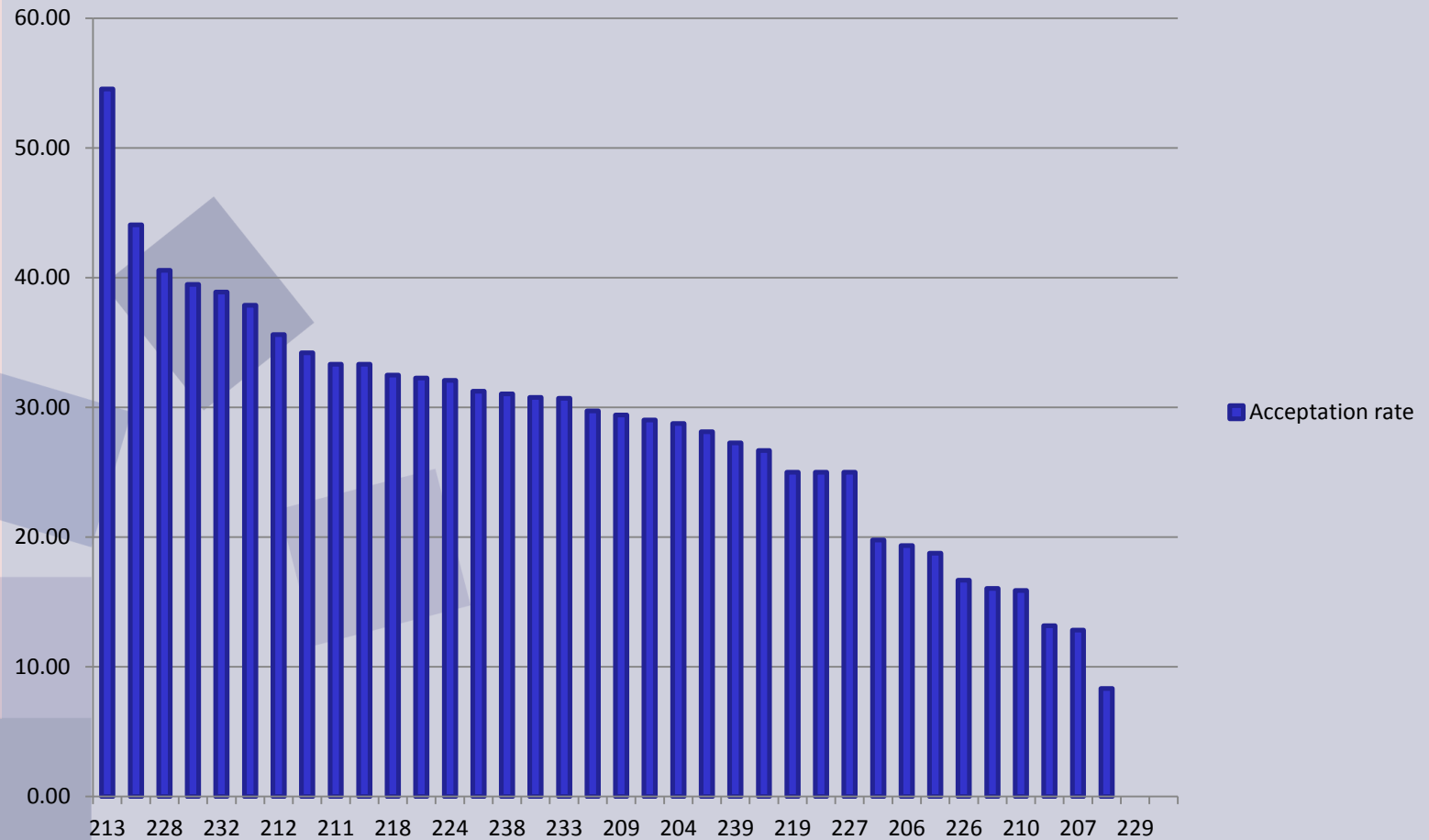


Results by contact attempts

N° contacts	Complete		Deceases		Partial		PDR		Refusal		No info	Total general	
	n	%	n	%	n	%	n	%	n	%		n	%
0			1	1%		0%	41	7%	1	0%		43	1%
1	449	31%	54	53%	14	20%	151	26%	677	36%		1345	33%
2	343	24%	13	13%	13	19%	60	10%	423	22%		852	21%
3	207	14%	7	7%	10	14%	59	10%	259	14%		542	13%
4	146	10%	7	7%	9	13%	41	7%	161	8%		364	9%
5	67	5%	5	5%	3	4%	30	5%	115	6%		220	5%
6	70	5%	2	2%	8	11%	33	6%	64	3%		177	4%
7	35	2%	4	4%	3	4%	26	4%	52	3%		120	3%
8	27	2%	3	3%			22	4%	50	3%		102	2%
9	27	2%	2	2%	1	1%	20	3%	24	1%		74	2%
10	20	1%			1	1%	13	2%	23	1%		57	1%
11	11	1%	1	1%	2	3%	12	2%	13	1%		39	1%
12	12	1%	1	1%		0%	14	2%	13	1%		40	1%
13	5	0%			1	1%	10	2%	9	0%		25	1%
14	2	0%					4	1%	5	0%		11	0%
15	3	0%			1	1%	5	1%	4	0%		13	0%
16+	5	0%					9	2%	9	0%		23	1%
No info empty	2	0%	1	1%	4	6%	29	5%	2	0%	20	38	1%
Total general	1431	100%	101	100%	70	100%	579	100%	1904	100%	20	4105	100%

Interviewers' efficiency

Acceptation rate by interviewers, Valais



Interviewers' efficiency

Acceptation rate by interviewers, Geneva



Synthetical measures on the rates and their distribution among the interviewers

Valais

	Complete	Refusal	Deceased	NA	Transfert	Partiel
Average	27.03	41.47	2.39	8.92	18.96	1.16
Std. dev.	11.35	11.29	2.76	8.46	16.84	2.40
Coefficient of variation	0.42	0.27	1.16	0.95	0.89	2.06

Geneva

	Complete	Refusal	Deceased	NA	Transfert	Partiel
Average	34.75	42.45	1.77	18.68	-	2.36
Std. dev.	14.27	13.59	2.61	9.84	-	3.26
Coefficient of variation	0.41	0.32	1.47	0.53	-	1.38

Response rates

$$\text{Response rate} = \frac{\text{N Interviews complets}}{(\text{IC} + \text{Partial}) + (\text{Refusal} + \text{No contact})}$$

	Response rate	
	SHARE 2004	ESS 2004
Danemark	59%	65%
Germany	52%	50%
Italy	44%	-
Netherlands	54%	-
Spain	37%	55%
Sweden	41%	66%
Austria	45%	62%
France	69%	-
Greece	55%	79%
Switzerland	33%	47%
Total	48%	55%

	Response rate VLV
Geneva	36%
Valais	35%
Switzerland	35%

Refusal rates

$$\text{Refusal rate 1} = \frac{\text{N Refusal}}{\text{N Selected}}$$

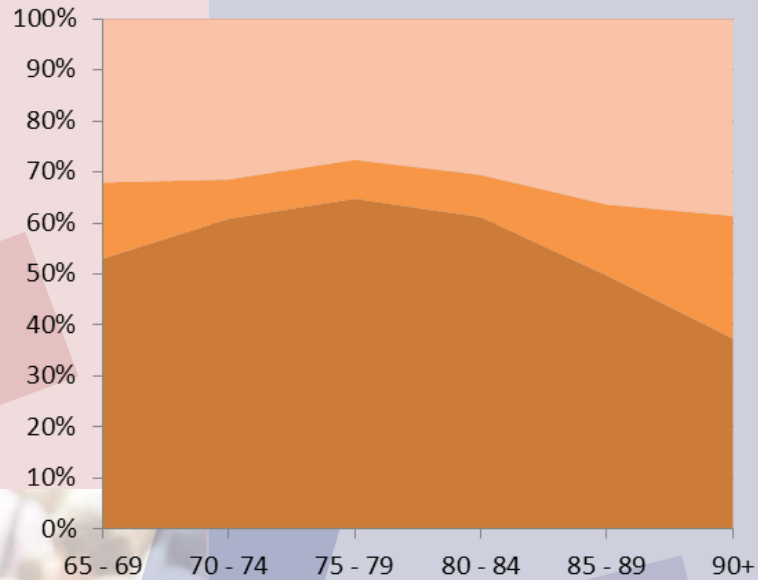
$$\text{Refusal rate 2} = \frac{\text{N Refusal}}{\text{N Voiced}}$$

* N Voiced = (N selected – N no contacted)

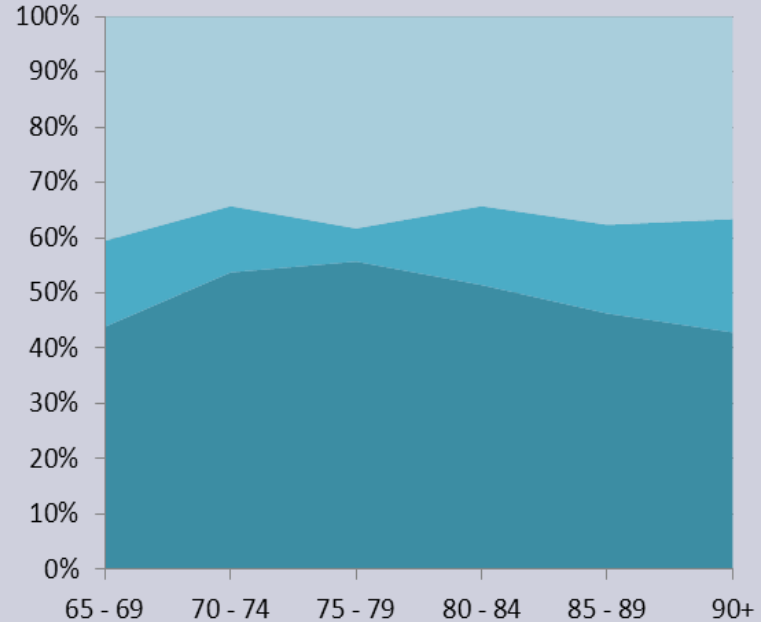
	Refusal rate SHARE 2004
Danemark	27%
Germany	34%
Italy	36%
Netherlands	33%
Spain	36%
Sweden	40%
Austria	35%
France	21%
Greece	29%
Switzerland	50%
Total	35%

	VLV 1979	VLV 1990		VLV 2011	
	Refusal1	Refusal1	Refusal2	Refusal1	Refusal2
Geneva	29%	33%	42%	42%	51%
Valais	20%	42%	48%	51%	57%
Total	25%	37%	45%	47%	54%

Complete, refusals and partial and Na and deceased in % by age, Women and Men, Valais

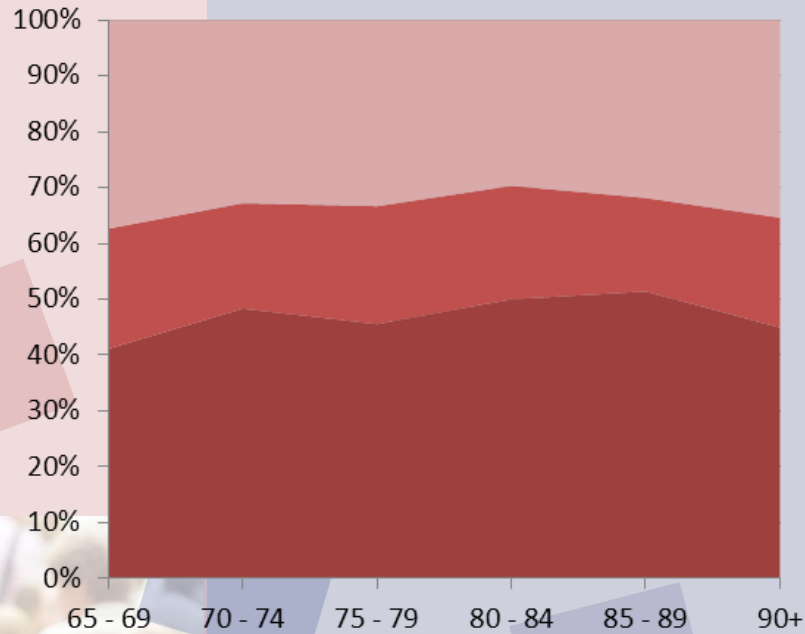


- Complete
- NA+Decease
- Refusal+Partiel

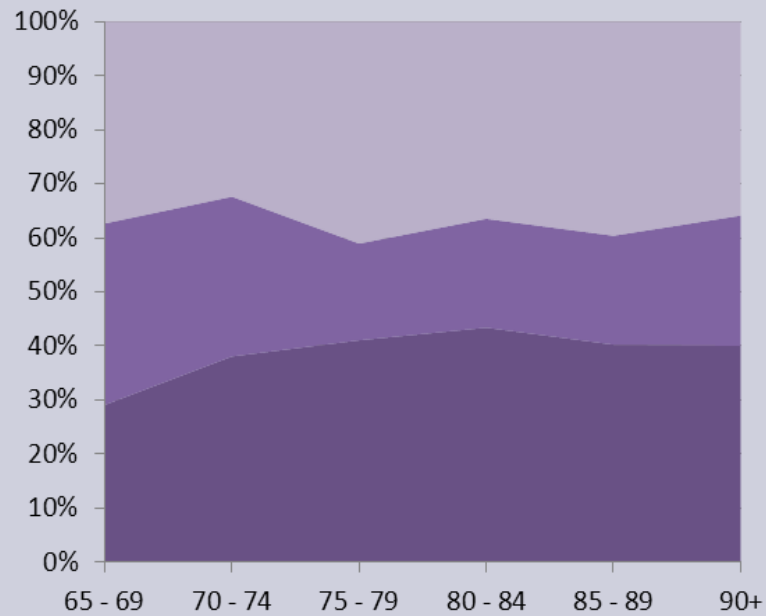


- Complete
- NA+Decease
- Refusal+Partiel

Complete, refusal and partial and Na and deceased in % by age, Women and Men, Geneva



- Completed
- NA+Decease
- Refusal+Partiel

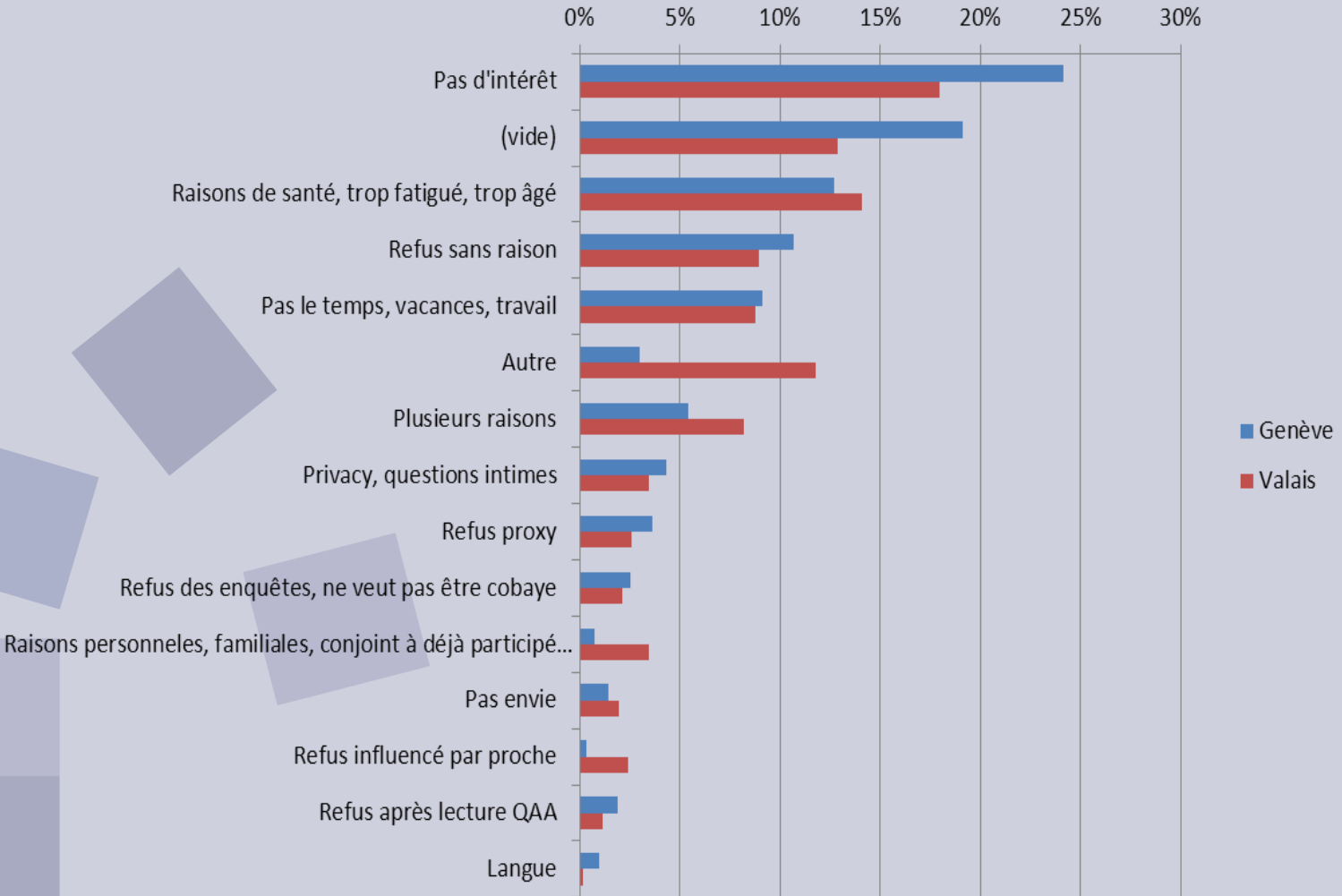


- Completed
- NA+Decease
- Refusal+Partiel

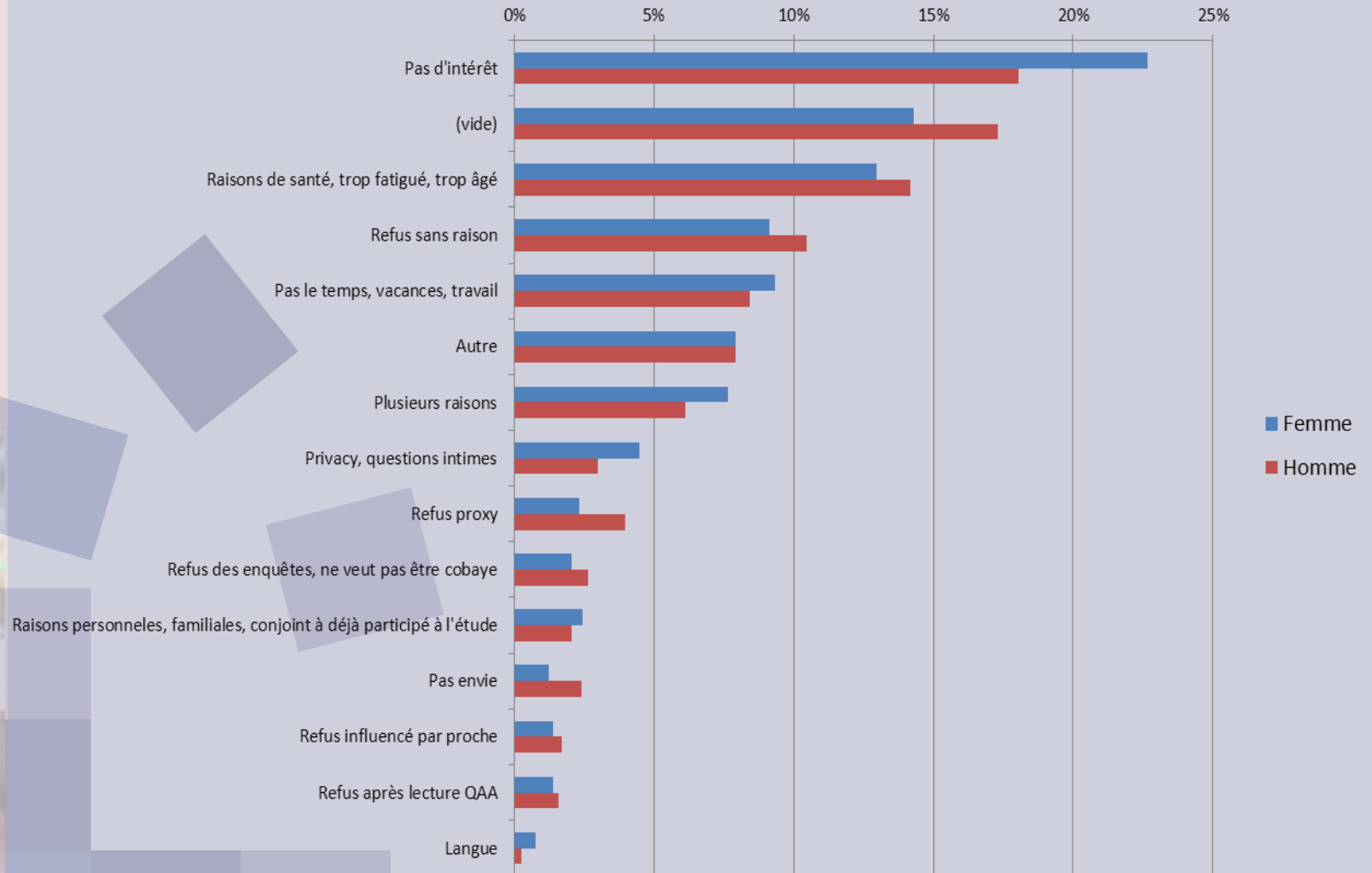
Logistic regressions

Surveyed	Both sexes							
	Probability of non-contact				Probability of complete participation			
	Model 1	Model 2		Model 1	Model 2			
Valais	1		1		1		1	
Genève	2.086	0.006	2.058	0.000	1.261	0.001	1.367	0.000
Males	1		1		1		1	
Females	0.780	0.006	0.777	0.006	0.766	0	0.767	0
65-69	1		1		1		1	
70-74	0.763	0.059	0.769	0.067	0.748	0.018	0.748	0.019
75-79	0.543	0.000	0.536	0.000	0.763	0.027	0.769	0.033
80-84	0.511	0.000	0.509	0.000	0.724	0.009	0.725	0.009
85-89	0.578	0.000	0.575	0.000	0.903	0.414	0.911	0.458
90 +	0.600	0.001	0.596	0.001	1.015	0.908	1.015	0.907
Surveyors								
Males			1				1	
Females			0.773	0.046			0.952	0.636
<30			0.989	0.925			1.214	0.048
30-44			1				1	
45 +			0.665	0.005			1.312	0.008
Tertiary educ.			0.882	0.454			0.855	0.170
Experience			0.879	0.223			1.006	0.940
=< 3 months			0.892	0.761			1.083	0.752
3 to 6			1				1	
6 & more			0.960	0.687			1.149	0.085
n. observ.		4105		4105		3338		3338
LR chi2		99.53		112.31		41.69		54.19
Prob > chi2		0.000		0.000		0.000		0.000
Pseudo R2		0.0298		0.0336		0.0091		0.0119

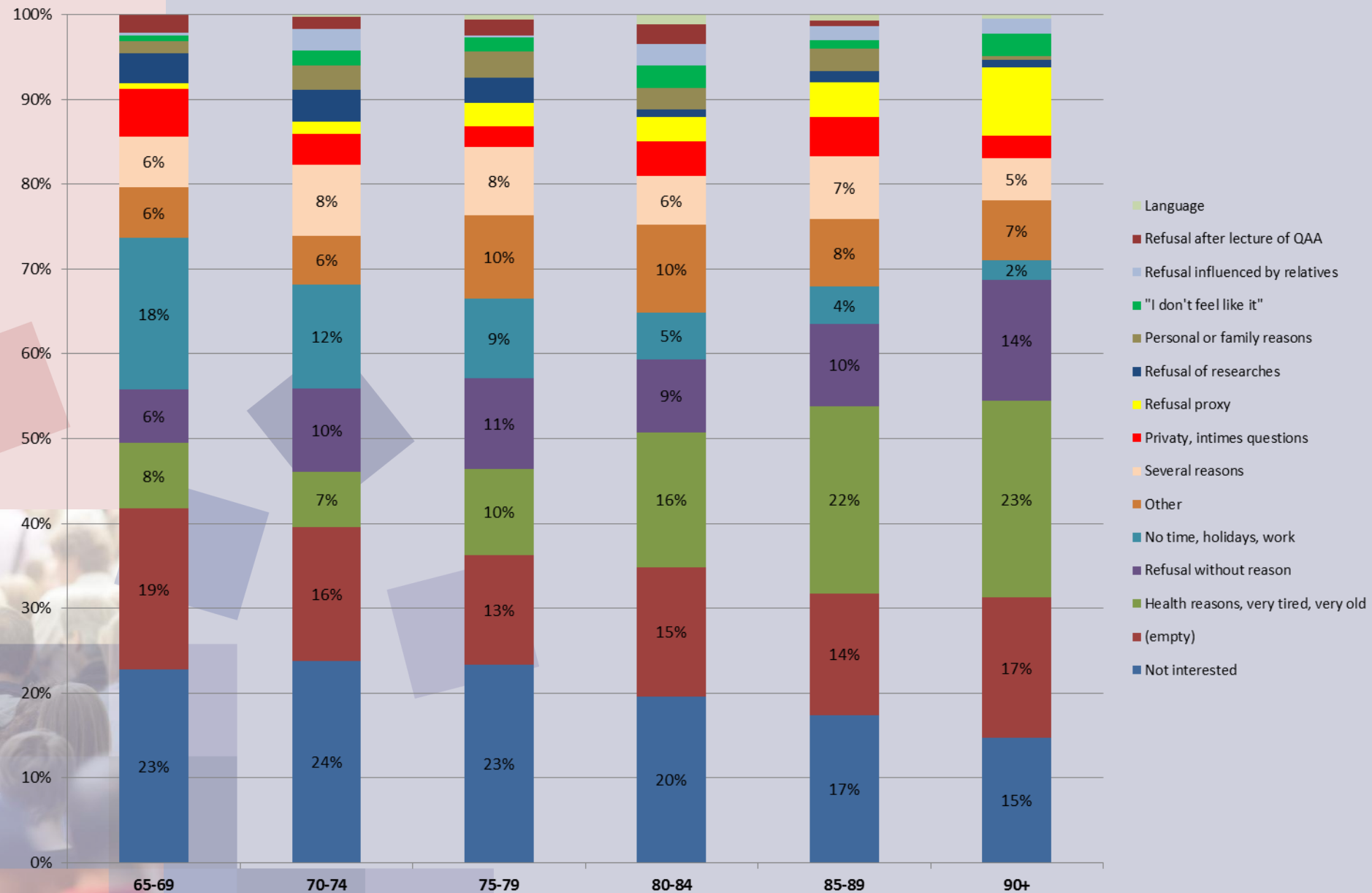
Causes of refusal in Valais and Geneva




Causes of refusal : Women and Men



Refusal reasons by age group





Thank you
for your
attention!