

LIVES at the University of Geneva: Annual Report 2025

1. Presentation

1.1 Director's foreword

2025 marked the third year of the Swiss Centre of Expertise in Life Course Research LIVES (LIVES Centre), as its predecessor, the National Centre of Competence in Research (NCCR) LIVES ended in December 2022. The LIVES Centre at the University of Geneva (LIVES UNIGE), located at the Interfaculty Research Center of Gerontology and Vulnerability Research (CIGEV), has many reasons to congratulate itself on what was achieved that year. The doctoral program managed by LIVES UNIGE is thriving under the attentive leadership of a new scientific officer, with two simultaneous cohorts of around 17 Ph.D. students each. In 2025, the program underwent an internal evaluation process and was deemed excellent by students and professors alike; the new “Causal Analysis” module was a valued addition. The same year, CIGEV recovered its administrative capacities. When the NCCR ended, the administrative staff at CIGEV was absent due to long-term health problems. The key ingredients of this favorable evolution were the constructive collaboration between the two co-directors of CIGEV (gerontology and LIVES) and successful hiring processes. Finally, and perhaps most importantly, research is flourishing at LIVES UNIGE. Several significant projects were funded in 2025. The LIVES Centre landed funds from the Swiss National Science Foundation for two large collaborative projects in 2025: Genfam (which brings the European Gender and Generation Program surveys to Switzerland; 2,5 mio) and Time Use (2,69 mio). These two projects are headed by LIVES researchers at the University of Lausanne but both have LIVES UNIGE work packages. Meanwhile, on-going research resulted in notable publications listed at the end of this report. The events and activities co-organized with the excellent LIVES Centre team at the University of Lausanne (writing retreat, LIVES Day, International Research Days, working groups, visiting scholars), as well as the LIVES UNIGE seminars led by its junior researchers, undoubtedly contributed to these successes. For example, the two thematic workshops co-organized by LIVES UNIGE, held in November 2025, on loneliness and family dynamics were not only exciting intellectual moments, but provided important platforms for interdisciplinary exchange. An award reflected these collective efforts: Prof. Matthias Studer (LIVES UNIGE) was the winner of the 2025 Society for Longitudinal and Lifecourse Studies Harvey Goldstein Memorial Award.

Clémentine Rossier
Director of LIVES UNIGE

1.2 Mission and objectives

The LIVES Centre develops innovative theories, methodological approaches, and empirical studies to advance life course research and deepen understanding of the various forms of vulnerability across the lifespan. Science, training, and societal engagement lie at the core of its mission, with the overarching goal of establishing the Centre as a leading reference at both national and international levels.

SCIENCE: Positioning the LIVES Centre as a national and international reference in interdisciplinary life course and vulnerability research

To foster collaboration among researchers and stimulate the development of new projects, the LIVES Centre organizes research seminars, international conferences, and networking events. We also support thematic working groups and provide funding for visiting international scholars.

In addition, the LIVES Centre team is actively engaged in initiating ambitious interdisciplinary projects capable of bringing together researchers from diverse disciplinary backgrounds. In 2024–2025, we coordinated the preparation of proposals for three major cross-cutting projects (each exceeding CHF 2 million), which have all been selected by the Swiss National Science Foundation (SNSF) and will strengthen interdisciplinary collaborations within the Centre in the coming years.

TRAINING: Preparing the next generation of highly qualified researchers in life course research

Following the conclusion of the NCCR, the restructuring of our doctoral program enabled us to welcome 19 new participants in 2025 into a two-year advanced training program. We continue to expand and strengthen our alumni network while supporting doctoral candidates and postdoctoral researchers through targeted grants and dedicated professional development events.

Beyond the doctoral program, the LIVES Centre demonstrates a strong commitment to researchers' professional development through competitive funding schemes for doctoral candidates and postdoctoral fellows. We also invest in fostering a supportive and stimulating research environment, including research seminars, conferences, networking events, and writing retreats.

SOCIETY: Transferring and co-producing knowledge on life course and vulnerability with professionals and the wider public

The LIVES Centre places its research at the service of society. We regularly publish policy briefs (LIVES Impact) and *Social Change in Switzerland*, a publication series that documents transformations in Swiss social structure for a broader audience.

We also support researchers interested in developing partnerships with non-academic stakeholders through our “science–society” grant scheme, as well as through targeted funding for events and science communication initiatives.

Our new communication strategy, developed in 2025, further strengthens the visibility of our research in the media and expands the production of accessible content tailored to practitioners and stakeholders who can apply our findings in their professional practice.

1.3 LIVES IN NUMBERS

	2023	2024	2025
Members (LIVES UNIGE)	58	63	62
Associated projects (LIVES UNIGE)	16	12	17
Associated projects’ financial volume (LIVES UNIGE)	1,3 mio	2,6 mio	2,9 mio
Working groups (LIVES UNIGE)	4	3	4
Visiting scholars (LIVES UNIGE)	1	3	2
Scientific publications (LIVES UNIGE)	61	50	89
Events (LIVES Centre)	36	37	43
Participants LIVES International Research Days (LIVES Centre)	165	160	150
Participants in the doctoral programme (2 cohorts, LIVES Centre)	20	34	34
Media interventions (LIVES Centre)	34	21	80
LIVES Impact (LIVES Centre)	0	2	1
Social change in Switzerland (LIVES Centre & FORS)	4	4	3

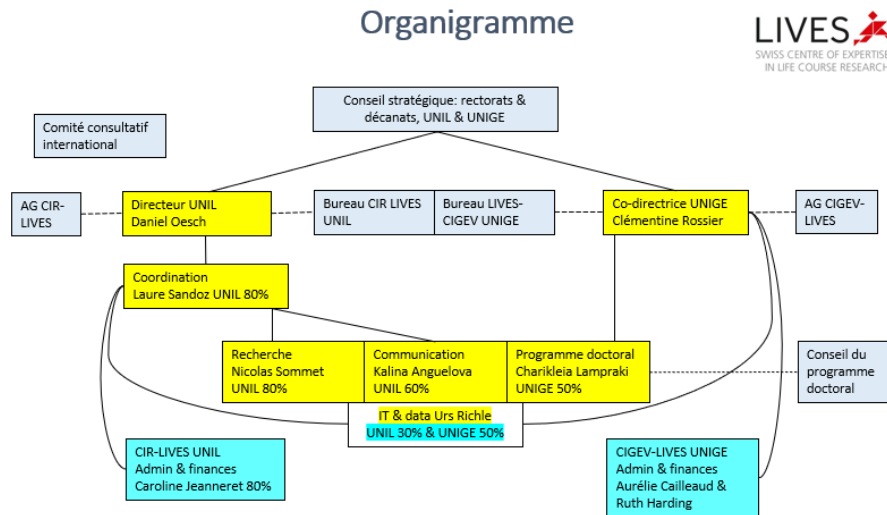
1.4 GOVERNANCE

The LIVES UNIGE is based within the CIGEV. As depicted in Figure 1, LIVES UNIGE is governed by the following organs:

- A director: Prof. Clémentine Rossier (2023-2026).
- A general assembly that meets once a year and comprises all LIVES members at the University of Geneva or those affiliated to it.
- A board that meets three times a year and supports the director to take strategic decisions. In 2025, it is composed by 4 professors, the scientific officer (Dr. Charikleia Lampraki), as well as the director of CIGEV Prof. Matthias Kliegel. The faculty of Psychology and Educational Sciences is represented by Prof. Andreas Ihle, the faculty of Social Sciences by Prof. Eric Widmer and Prof. Claudine Burton-Jeangros, the Geneva School of Economics and Management by Prof. Michele Pelizzari. Since 2024 the board has gained one member (the scientific officer) and the main faculties are all represented.

A similar structure governs the LIVES Centre in the University of Lausanne, directed by Prof. Daniel Oesch. Although the two poles of the LIVES Centre have separate financial and administrative functions, the two co-directors jointly plan the scientific and research activities. An International Advisory Board of six experts in life course research guides the overall activities of the LIVES Centre, in an annual meeting. A Strategic Council, composed of the rectorate and one dean from the Universities of Geneva and Lausanne, oversees its overall functioning.

Figure 1. Organisational Structure of the LIVES Centre



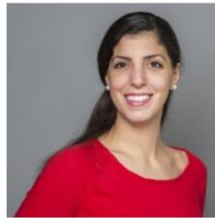
1.5 Members & Team

The LIVES UNIGE includes 62 members at the end of 2025. The team of the LIVES Centre at the University of Geneva is composed of one director (Clémentine Rossier), one scientific officer (Charikleia Lampraki, 50%), one IT and Data officer (Urs Richte, 50%), one administrative officer (Aurélie Cailleaud, 60%) and one secretary (Ruth Harding, 30%).

The administrative team of the LIVES Centre at the University of Geneva



Clémentine Rossier



Charikleia Lampraki



Urs Richte



Aurélie Cailleaud



Ruth Harding

2. Research

2.1 Associated projects

In 2025, LIVES UNIGE hosted 19 scientific projects, with approximately 2,9 million CHF received from external fundings sources.

Project Leaders	Title	Start date	End date	2025 funding in CHF	Funding source	Institutions
Widmer Eric	Observatoire des familles	01.01.2016	ongoing	114 518	Fondation Willsdorf	University of Geneva
Konstantas Dimitri, Wac Katarzyna, Kliegel Matthias	Age-INT - Expertise internationale pour la vie des personnes âgées	01.01.2021	30.06.2025	155 555	Confédération Suisse - Département SEFRI	University of Geneva
Studer Matthias	Strengthening Sequence Analysis	01.02.2022	28.02.2026	114 000	SNSF – Division I	University of Geneva
Zittoun Tania, Gillespie Alex, Muller Mirza Nathalie	Societal Crises and Personal Sense-Making: Transitions, Mobility, and Imagination Across the Lifecourse	01.06.2022	31.05.2026	5 000	NCCR On the Move	University of Geneva
Bonvin Jean-Michel, Debruyne Michel	INVOLVE: For trustful, participatory and inclusive public policies	01.01.2023	31.12.2026	177 500 (Euros)	Confédération Suisse - Département SEFRI (Horizon Europe)	University of Geneva
Cottier Michelle, Aeby Gaelle, Widmer Eric	The practice of family law during the Covid-19 pandemic: digital justice and gender inequalities	01.04.2023	31.03.2026	135 556	FNS - PNR 80	University of Geneva
Rosenstein Emilie, Studer Matthias, Pons-Vignon Nicolas, Duvoisin Aline	Fit for crisis? Social policy in times of Covid-19: a longitudinal mixed-method approach	01.04.2023	31.03.2026	169 941	FNS - PNR 80	University of Geneva, HETSL, SUPSI

Kliegel Matthias, Maurer Jürgen, Wieczorek Maud	An Online Modified Delphi Study and Survey Among Academic Thought Leaders, Policy Practitioners and Active Researchers in Gerontology	01.06.2023	31.05.2025	124 425	Velux Foundation	University of Geneva & University of Lausanne
Droz Yvan, Golaz Valérie, Rossier Clémentine	FamiLEA: The Remaking of the Family in East Africa	01.06.2023	31.05.2027	746 714	SNSF – Sinergia	University of Geneva
Guiella George, Rossier Clementine	Modelling the impact of contraception on women's empowerment in sub-Saharan Africa using recent longitudinal PMA data and sequence analysis	16.06.2023	28.08.2025	85 686 (USD)	Guttmacher Institute	University of Geneva, University Joseph Ky-Zerbo (Burkina Faso)
Ghisletta Paolo	Metabolic and vascular risk as modifiers of the relationship between age-dependent changes in the brain and cognition	01.07.2023	30.06.2027	66 615	SNSF – Division I	University of Geneva
Bonvin Jean-Michel, Lucas Barbara	Accès aux droits : Mandat d'évaluation du Bureau d'information sociale (BiS) du canton de Genève	01.01.2024	30.09.2025	50 000	Département de la cohésion sociale et de la solidarité, République et canton de Genève	University of Geneva, HES-SO Genève
Vacchiano Mattia	The Empty Office: An International Study of Teleworking	01.01.2024	31.12.2025	147 500	Swiss Network for International Study	University of Geneva
Cullati Stéphane, Burton-Jeangros Claudine, Bracke Piet, Toma Sorana	Prevent too: Reducing social and life course inequalities in preventive practices: a comparative study of the effects of health and social policies	15.04.2024	31.03.2028	258 333	SNSF – Division I & Research Foundation – Flanders	University of Fribourg, University of Geneva, Ghent University

Ihle Andreas	APOE-related pathological cognitive development and cognitive reserve accumulation pathways: a detailed lifespan perspective	01.06.2024	31.05.2028	90 537	SNSF – Division I	University of Geneva
Widmer Eric, Staerklé Christian	Turbulent times: Personal Networks and Social Identities of Swiss Young Adults (IdNet)	01.10.2024	30.09.2028	193 754	SNSF – Division I	University of Geneva, University of Lausanne
Ihle Andreas	Cognitive reserve accumulation pathways and pathological cognitive development: a detailed lifespan perspective	01.02.2025	31.01.2029	91 756	SNSF – Division I	University of Geneva
Stephanie Steinmetz, Gesine Fuchs, Marco Giesselmann, Irene Kriesi, Jean-Marie Le Goff, Jörg Rössel, Clementine Rossier, Katja Rost, Núria Sánchez Mira, Isabelle Zinn	(Un)changing gender relations and family diversity in Switzerland: causes, consequences, and challenges from a comparative perspective (GenFam)	01.05.2025	30.04.2029	215 434	SNSF – Division I	University of Lausanne, University of Geneva, Hochschule Luzern, Universität Zürich, Eidgenössische Hochschule für Berufsbildung, Université de Neuchâtel, Berner Fachhochschule
Antoine Lefebvre, Eric Widmer	Partenariats éducatifs des jeunes athlètes de haut niveau engagés dans un dispositif d'accession vers le haut niveau en Gymnastique et en Judo	01.10.2025	01.08.2028	35 294 (Euros)	Région Normandie	University of Geneva, Université de Rouen

Interdisciplinary projects

The LIVES Centre team strives to promote the development of large cross-cutting projects capable of bringing together a substantial number of researchers from the LIVES network. In 2025, the project “(Un)changing gender relations and family diversity in Switzerland: causes, consequences, and challenges from a comparative perspective (GenFam)”, led by Stephanie Steinmetz (Unil & FORS; one work package led by researchers at LIVES UNIGE) was funded by the SNSF with CHF 2.5 million. Another major project initiated by LIVES, “The Social Stratification of Time: Investigating Inequalities in Time Use through a Swiss Diary Study”, led by Caroline Roberts (Unil; partnership with LIVES-UNIGE and CIGEV) was funded by the SNSF with CHF 2,69 million. Furthermore, the project “Subjective Well-Being Across the Life Course: A Global Research Program With 200+ Panel Datasets From 90 Countries” led by LIVES-UNIL research officer Nicolas Sommet (with one work package led by researchers at LIVES UNIGE) was resubmitted to the SNSF in October 2025 and accepted in April 2026 for CHF 1,9 million.

2.2 Research support

In 2025, innovative researchers at various academic levels benefited from support from the LIVES Centre at the University of Geneva. In total, the Young Scholar Grants enabled 2 doctoral students and 2 postdoctoral researchers to independently develop research projects on the life course. The Visitor Grants funded visits by 2 invited researchers. In addition, the LIVES Centre hosted 10 working groups in 2025 organized by LIVES researchers (4 working groups at UNIGE), which can receive occasional financial support for their scientific activities.

Young Scholar Grants

This grant provides funding of up to 6,000 CHF to enable doctoral and postdoctoral researchers to conduct innovative research on the life course. It can be used to write an article or to develop a project.

2025 Beneficiaries

- Gaëtane Ciaravino - **What are the psychometric properties of resilience questionnaires?**
- Marwa Mahmoud - **Shared narratives as tools for addressing social trauma and fostering resilience: A study of Palestinians in Egypt through lifelong learning**
- Anahita Mehrpour - **Cure or curse? Social identity dynamics, trust, and conspiracy mentality shaping COVID-19 health behaviors in Switzerland and Canada**
- Sascha Zuber - **Examining the role of adolescent personality as early life course predictor – A systematic literature review and meta-analysis**

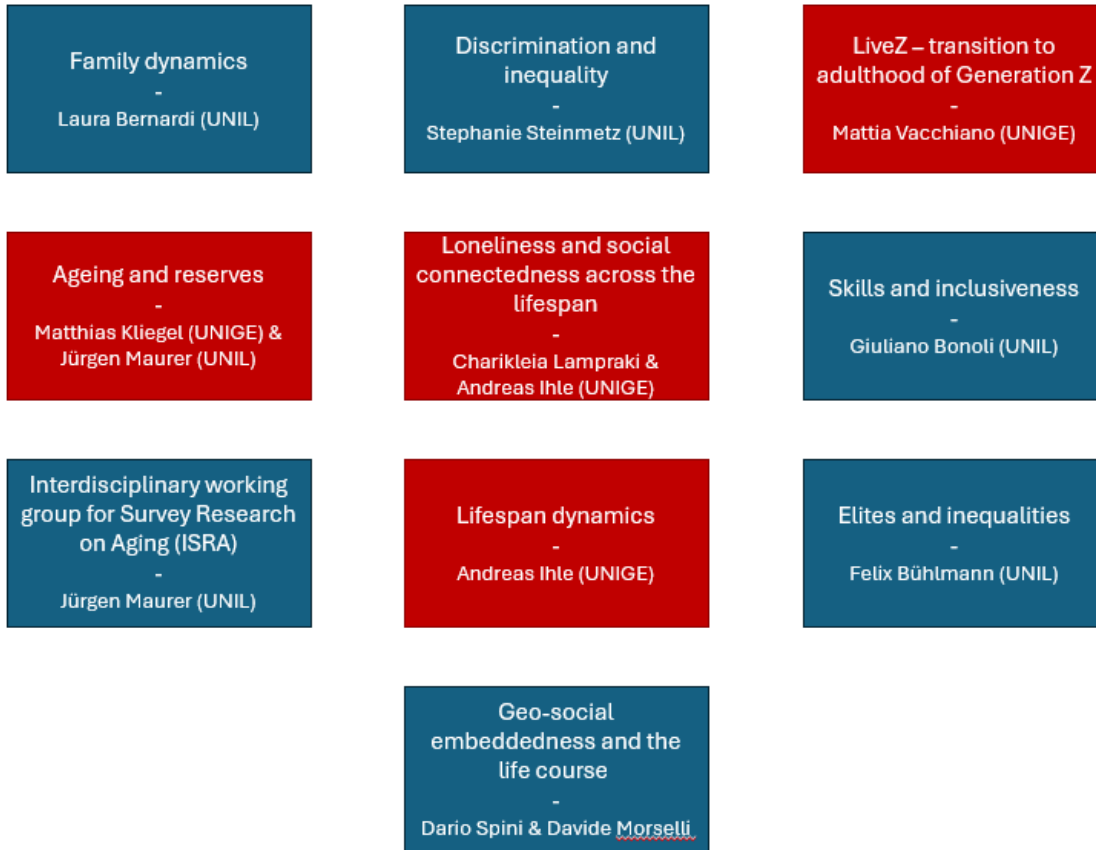
Visitor Grants

This grant provides funding of up to 3,000 CHF to enable international researchers to visit the LIVES Centre for a minimum duration of two months.

- Eva Padrosa, Hospital del Mar Nursing School
- Maximilian Reichert, Erasmus University of Rotterdam

Working Groups

Working groups serve as spaces for reflection and research, open to members of the LIVES Centre. Their mission is to develop, at the initiative of researchers, interdisciplinary collaborations in the field of life course research and/or vulnerability.



2.3 Scientific events

International Thematic Workshops – November 5th and 6th, 2025

On the 5th and 6th November 2025, more than 150 researchers took part in six international thematic workshops organised by the LIVES Centre at the University of Lausanne. These parallel workshops focused on key topics related to the life course and vulnerability, bringing together internal and external speakers for two full days of scientific exchange. Structured around three sessions each, the programme fostered dynamic discussions and offered participants the opportunity to engage with diverse perspectives across workshops, as well as to connect during shared breaks and informal moments. The event included two keynote speeches by Valentina di Stasio (EUI) and Kelly Musick (Cornell University).

14th annual conference of the Society for Longitudinal and Life Course Studies (SLLS)

The LIVES Centre supported the 14th annual conference of the Society for Longitudinal and Life Course Studies (SLLS), entitled “Life Course Transitions & Patterns: Stronger Evidence for Better Policies”, held at the University of Fribourg from 8 to 10 September 2025. Co-organised by Stéphane Cullati (PopHealthLab), the conference brought together nearly 300 participants and featured a rich programme including keynote lectures, symposium sessions, and numerous

paper and poster presentations. LIVES was one of the main sponsors of the event. The opening keynote was delivered by Claudine Burton-Jeangros (University of Geneva and LIVES Centre), contributing to a stimulating international exchange on life course research and policy.

LIVES DAY – June 3rd, 2025

This annual meeting brought together more than 80 members of the LIVES Centre from the Universities of Lausanne, Geneva, and beyond for an afternoon of scientific exchange. The 2025 program included 34 short presentations of research findings by members of the LIVES network. Two keynote talks—by Alicia Garcia Sierra (UNIL) on interactions between genetics and social inequality, and by Chiara Scarampi (UNIGE) on cognitive aging—opened and closed the event.

LIVES Welcome Day, GA CIGEV – August 27th, 2025

In the context of the CIGEV General Assembly, the LIVES members at the University of Geneva were invited to attend this annual event, in which the activities of the Centre were presented. One external keynote speaker is invited every year to present their work. In 2025, Theresa Pauly from the Simon Fraser University presented her work on “Lifelong health & well-being: What ecological momentary assessment data tells us about health and social connections in older adults”. The event was followed by an aperitif and informal discussions.

LIVES Events at UNIGE

The LIVES Centre at the University of Geneva organizes a series of interdisciplinary scientific exchanges, open to the public, where international experts are invited to present their work. In 2025, 4 presentations were organised:

- February 27th, 2025, “Precarious employment and mental health in evolving labor markets: Disentangling a complex reality”, **Eva Padrosa**, Hospital del Mar Nursing School
- May 13th, 2025, “The life course boat: A theoretical framework for analyzing variation in family lives across time, place, and social location”, **Zachary van Winkle**, Sciences Po’
- September 29th, 2025, “Le Sans-abrisme : condition de vie complexe à l’aune de la vulnérabilité”, **Shirley Roy**, University of Québec à Montreal
- December 10th, 2025, “Loneliness and social isolation in later life: prevalence, causes, and societal responses”, **Stefano Cavalli**, SUPSI

Writing Retreat, February 3-6, 2025

For the second consecutive year, the LIVES Centre organised a writing retreat at Schwarzsee (Fribourg) to support the development of interdisciplinary articles and research projects on the life course and vulnerability. Around thirty researchers from the LIVES network took part in four intensive days of collective work and exchange in a pleasant setting, away from everyday distractions.

2.4 Awards and Publications

The LIVES Centre congratulates Matthias Studer (University of Geneva) on receiving the prestigious SLLS Harvey Goldstein Memorial Award from the Society for Longitudinal and Lifecourse Studies. This distinction recognises his outstanding contributions to advancing methodologies in life course research and highlights the LIVES Centre’s leading role in methodological innovation in the field.

In addition, LIVES researchers have produced a substantial number (89) of high-quality publications over the reporting period (Appendix). These include contributions in leading international journals such as *Nature Communications* and *Nature Aging*, as well as key outlets in life course and behavioural research, such as the *Advances in Life Course Research* and the *International Journal of Behavioral Development*. Notable examples include work on socioeconomic inequalities and cognitive aging, methodological advances in longitudinal modelling, and interdisciplinary research on health, aging, and social conditions. These publications illustrate the Centre's continued leadership in advancing life course research across disciplines.

3. Doctoral Programme



Through its doctoral programme, the LIVES Centre trained in 2025 under the direction of the University of Geneva, 34 doctoral researchers across two cohorts that began in December 2023 and December 2024, respectively. Over the course of this two-year programme, early-stage researchers from disciplines such as sociology, demography, psychology, health sciences, and related fields are introduced to quantitative and qualitative life course methods, longitudinal analysis, interdisciplinarity, and life course theory.

The programme, originally launched in 2012 within the framework of the NCCR LIVES and revised after its conclusion in 2023, admits a new cohort each year following a competitive selection process conducted by the LIVES Doctoral Committee. The current cohorts include doctoral researchers from the Universities of Lausanne and Geneva as well as several international institutions. Their projects all share a common life course or lifespan perspective.

The updated curriculum combines theoretical and methodological training with regular opportunities for participants to present and discuss their own research. It consists of four theoretical modules, four methodological modules, and annual Doctoral Days. Each module takes the form of a 2- to 4-day in-person workshop, taught by LIVES researchers and invited international experts. Participants are required to attend a minimum number of training days and receive ECTS credits, as well as certificates of participation upon request.

The programme places strong emphasis on both conceptual foundations and applied methodological skills. Continuous feedback from participants is collected after each module and used to refine future editions. The LIVES Centre also provides financial support to facilitate participation, covering travel, meals, and—particularly for international doctoral students—part of the accommodation costs.

Modules 2025

- 10–13 February 2025, University of Lausanne: “Fixed-effects models, event-history and sequence analysis” & Doctoral Days

- 17–19 June 2025, University of Lausanne: “Causal analysis”
- 1–3 September 2025, University of Lausanne: “Social policies in a life course perspective”
- 1–3 December 2025, University of Lausanne: “Introduction to life course theories, life span theories and life course methods”

4. Society

4.1 Research Briefs

The LIVES Centre publishes briefs highlighting research findings relevant to public and social policy (LIVES Impact), which are translated into French, English, and German. It also collaborates with FORS to produce *Social Change in Switzerland*, a series aimed at documenting changes in Switzerland’s social structure for a broader audience.

Social Change in Switzerland 2025

- February 2025, “The influence of taxation on wealth distribution in Swiss cantons, 1969–2018,” Isabel Z. Martínez, Samira Marti and Florian Scheuer
- March 2025, “The cost of traditional marital arrangements: Income loss, poverty, and social protection after divorce,” Robert Fluder and Dorian Kessler
- April 2025, “Two children or none: Fertility in Switzerland between 1946 and 2022,” Jean-Marie Le Goff and Valérie-Anne Ryser

LIVES Impact 2025

- March 2025, “Precarious work among paid domestic cleaners in Switzerland,” André Borges, Milena Greve, Koorosh Massoudi

4.2 Science-Society Events

The LIVES Centre supports the organisation of events aimed at disseminating its research findings to professionals, policymakers, and the general public. The following events took place in 2025:

Title	Date & Location	Audience	Organisers
Alea. Des parcours de vie - visite guidée et conférence	13.11.2025, Musée romain de Lausanne-Vidy	Ouvert au public	Dario Spini et Laure Sandoz
Assises des familles 2025	03.06.2025, Centre d’Animation pour Retraites	Professionals (researchers, social workers, psychologists, mediators, etc.) working on the challenges faced by families	Avenir Familles
Centenarians in Switzerland: Vulnerability and Resilience	22.05.2025, UNIL	Study participants, professionals, researchers	Swiss100 Project (LIVES Centre)
Pathways and actions to improve working conditions in the domestic work sector in Switzerland: A multi-stakeholder dialogue	04.04.2025, UNIL	Study participants, policymakers, NGOs, trade unions, researchers	André Borges and Koorosh Massoudi (LIVES Centre)

5. Accounts 2025

CENTRE LIVES UNIGE SITUATION FINANCIÈRE 2025 et BUDGET 2026

19.01.2026



	2025		Solde 2025		2026 Budget*
	Budget ajusté	Dépenses	CHF	%	
BUDGET UNIGE	48 380	45 141	3 239	7%	37 540
Office	1 380	1 001	379	27%	1 500
Office Misc	500	152	348	70%	500
Meetings & Bureaux LIVES	880	849	31	4%	1 000
Science-Society UNIGE	-	-	-		5 500
Support to Science-Society activities	-	-	-		3 000
Science-Society events	-	-	-		2 500
Scientific UNIGE	47 000	44 141	2 859	6%	30 040
Young Scholar Grants	18 000	18 043	-43	0%	15 500
Working Groups	8 000	7 978	22	0%	5 000
Visiting Scholars	6 000	5 945	55	1%	3 000
Welcome Day & AG	3 300	2 021	1 279	39%	3 000
Support to Seminars	1 700	1 166	534	31%	2 000
Support to CIGEV-LIVES researchers	2 500	1 897	603	24%	1 540
Support to research	7 500	7 092	408	5%	-
Réserve	-	-	-		500
BUDGET COMMUN	6 160	8 077	-1 917	-31%	28 000
ProDoc	5 456	5 773	-316	-6%	10 500
ProDoc-Session 1	1 333	737	596	45%	1 450
ProDoc-Session 5-2 (février)	3 133	4 637	-1 503	-48%	3 450
ProDoc-Session 6-3 (juin)	2 333	2 006	327	14%	2 800
ProDoc-Session 7-4 (septembre)	2 200	1 829	371	17%	2 800
ProDoc-other sessions	876	983	-107	-12%	-
ProDoc-Balance *	-4 420	-4 420	-	0%	-
Science-Society UNIL UNIGE	1 984	1 784	200	10%	200
Policy briefs (LIVES Impact)	200	-	200	100%	200
Science-Society-Balance *	1 784	1 784	-	0%	-
Communication UNIL UNIGE	3 791	2 052	1 739	46%	2 500
Communication	2 000	261	1 739	87%	2 500
Communication-Balance *	1 791	1 791	-	0%	-
Scientific UNIL UNIGE	-5 071	-1 531	-3 540	70%	14 800
LIVES Day	1 250	1 290	-40	-3%	1 800
Writing Retreat	7 500	7 500	-	0%	7 000
Thematic Workshops	7 000	7 857	-857	-12%	6 000
Advisory Board	1 500	1 500	-	0%	-
Scientific-Balance *	-24 021	-21 378	-2 643	11%	-
TOTAL	54 540	53 218	1 322	2%	65 540

* Les lignes budgétaires en rouge notées "balance" rendent compte de l'équilibrage, par catégorie, des dépenses entre l'UNIL et l'UNIGE.

** Budget 2026 sous réserve d'acceptation formelle de la demande de dépassement budgétaire par le Rectorat.

Appendix – List of Publications

Author	Title	Journal / Book
Burton-Jeangros, Claudine	Experiences of Health Risks. Prevention, Power Dynamics and Inequalities	Book / Critical Studies in Risk and Uncertainty (series)
Cottier, Michelle; Aeby, Gaëlle; Müller, Brigitte; Schoch, Aline	Intégrité, autonomie et participation dans la protection de l'enfant	Book
Gouveia, Bruna Ornelas de; Gouveia, Élvio Rúbio; Nascimento, Marcelo de Maio; Ihle, Andreas	Exercise interventions for people with depression	Physical Activity, Physical Fitness and Depression
Nascimento, Marcelo de Maio; Gouveia, Élvio Rúbio; Marques, Adilson; Gouveia, Bruna Ornelas de; Ihle, Andreas	Physical activity, cognitive function, and depression	Physical Activity, Physical Fitness and Depression
Nascimento, Marcelo de Maio; Marques, Adilson; Gouveia, Élvio Rúbio; Ihle, Andreas; Nascimento, Marcelo de Maio; Marques, Adilson; Gouveia, Élvio Rúbio; Ihle, Andreas	Role of Income, Education, and Physical Activity in Mediating the Relationship Between Self-Rated Health and Political Participation of European Citizens	Societies
de Maio Nascimento, Marcelo; Marques, Adilson; Gouveia, Élvio Rúbio; Ferrari, Gerson; Ihle, Andreas	Differential cross-lagged relations of frailty predicting later depression in older women versus men	Journal of Health Psychology
Nascimento, Marcelo de Maio; Marques, Adilson; Gouveia, Élvio Rúbio; Ferrari, Gerson; Ihle, Andreas	Cognition Mediates the Association Between Meaning in Life and Depression: Sex-Differentiated Analysis in Europeans Aged 50 and Over	Psychiatric Quarterly
Nascimento, Marcelo de Maio; Marques, Adilson; Ferrari, Gerson; Gouveia, Élvio Rúbio; Ihle, Andreas	Longitudinal Associations Between Cognition and Grip Strength, Differentiated by Sex and Physical Activity: A Population-Based Study in Older Adults From 17 European Countries	Journal of Aging and Health
de Maio Nascimento, Marcelo; Ihle, Andreas; Gouveia, Élvio Rúbio; Gonzalez, Ricardo Hugo; Marques, Adilson	The effect of frailty on the relationship between cognition and depression symptoms in older people. A differential analysis by European regions	GeroScience
Lopes, Maria V.; Ihle, Andreas; Gouveia, Élvio Rúbio; Marques, Adilson; Cinarlı, Fahri Safa; França, Cíntia; Lopes, Maria V.; Ihle, Andreas; Gouveia, Élvio Rúbio; Marques, Adilson; Cinarlı, Fahri Safa; França, Cíntia	Parents and Athletes' Perceptions of Parental Involvement Practices in Youth Basketball	Future
França, Cíntia; Ashraf, Sadaf; Marques, Adilson; Ihle, Andreas; Lopes, Helder; Campos, Pedro; Gouveia, Élvio Rúbio	Effects of Exergaming on Physical Fitness of Youth with Overweight and Obesity: A Systematic Review with Meta-Analysis	Games for Health Journal
Wieczorek, Maud; Kliegel, Matthias; Beard, John; Guillemin, Francis; Avendano, Mauricio; Maurer, Jürgen	Can ChatGPT Provide Useful Guidance to Assess the Current State of and Future Priorities for Aging Research in the Social Sciences?	Journal of Aging & Social Policy

Card, David; Colella, Fabrizio; Lalive, Rafael	Gender Preferences in Job Vacancies and Workplace Gender Diversity	The Review of Economic Studies
Widmer, Eric; De Carlo, Ivan; Fernandez-Garcia, Javier; Ganjour, Olga; Girardin, Myriam; Latifi, Tina; Mehrpour, Anahita; Nada, Eva; Schuler, Paul; Sapin, Marlène; Viry, Gil	Réseaux Personnels des Jeunes Adultes en Suisse	Report
Rossier, Clementine	Préface	Cinquante ans de planification familiale Un témoignage en République démocratique du Congo
Burton-Jeangros, Claudine	Vulnerabilization of Migrant Workers nccr – on the move	Report
Gianettoni, Lavinia; Blondé, Jérôme; Guilley, Edith; Foretay, Taïs; Gross, Dinah	Vécu de discriminations homophobes et intentions d'arrêt dans la formation professionnelle	L'orientation scolaire et professionnelle
Vétois, Matthieu; Kende, Judit; Geisser, Christopher; Pedrazzini, Sabina; Falomir-Pichastor, Juan M.; Green, Eva G. T.	Valence of immigration news, perceived threat, and support for restrictive immigration policy: A multilevel study across 26 countries	Political Psychology
Blondé, Jérôme; Falomir-Pichastor, Juan Manuel	The role of Western values of autonomy in public stigma of addiction	Addiction Research & Theory
Laulan, Pierrick; Fernandez, Matthieu L. G.; Abet, Emeric; Dimet, Jérôme; Rimmelé, Ulrike	The Flush Model: A Novel Framework to Manage Surgeons' Mental Fatigue and Cognitive Load	Annals of Surgery Open
Potasso, Laura; Wiecek, Maud; Monnerat, Sophie; Beck, Julia; Orav, Endel; Christ-Crain, Mirjam; Bischoff-Ferrari, Heike	Prevalence, incidence and risk factors for dysnatremia in european community-dwelling older adults - a secondary analysis of the DO-HEALTH trial	Endocrine Abstracts
Escarião, Wellydo Keslowd Marinho; Silva, Guilherme Henrique Viana da; Castro, Hellen Suzane Clemente de; Silva, Sayonara Pereira da; Santana, Nelyane Nayara Martins de; Lima, Ramon Hypolito; Fiuza, Felipe Porto	Layer-Specific Colocalization of Microglia with Amyloid Plaques in the Middle Temporal Gyrus Predicts Cognitive Decline in Alzheimer's Disease	Aging and disease
Fernandez, Guillaume P.	Centrality and social domains: The role of support, conflict, and ambivalence in the perception of linguistic similarity	Network Science
Meier, Clément; Wiecek, Maud; Sillitti, Paola; Mucchiut, Olivier; Jox, Ralf J.; Maurer, Jürgen	47 Mirror of the mind: How personal preferences shape perceptions of partners end-of-life wishes	BMJ Supportive & Palliative Care
Mehrpour, Anahita; Widmer, Eric D.; Staerklé, Christian	Social network analysis in social psychological research (1990–2020): A scoping review	British Journal of Social Psychology
Burton-Jeangros, Claudine; Refle, Jan-Erik; Fakhoury, Julien; Consoli, Liara; Jackson, Yves	Legal Status Regularization, Satisfaction with Life and Gender: A Longitudinal Study of Undocumented Workers in Switzerland	Social Indicators Research

Stoeklin, Daniel	The Transactional Horizons of Child Vulnerability	Perspectives on Children, Rights, and Vulnerability
Miller, Matt L.; Ferrer, Emilio; Ghisletta, Paolo	The current practice of latent growth curve modeling in the social and behavioral sciences: Observations and recommendations	International Journal of Behavioral Development
Wettstein, Markus; Ghisletta, Paolo; Demuth, Ilja; Gerstorf, Denis	Subjective age and pulmonary function in midlife and old age: Evidence for between-person associations and within-person co-occurrence	International Journal of Behavioral Development
Vidal-Piñeiro, Didac; Sørensen, Øystein; Strømstad, Marie; Amlie, Inge K.; Anderson, Micael; Baaré, William F.C.; Bartrés-Faz, David; Brandmaier, Andreas M.; Bråthen, Anne Cecilie; Garrido, Pablo; Ghisletta, Paolo; Grydeland, Håkon; Henson, Richard N.; Kievit, Rogier A.; Korbmayer, Max; Kühn, Simone; Lindenberger, Ulman; Mowinckel, Athanasia M.; Nyberg, Lars; Roe, James M.; Sneve, Markus H.; Sole-Padulles, Cristina; Watne, Leiv-Otto; Walhovd, Kristine B.; Fjell, Anders M.	Reliability of structural brain change in cognitively healthy adult samples	Imaging Neuroscience
Mason, Fabio; Cantoni, Eva; Ghisletta, Paolo	Linear mixed models and latent growth curve models for group comparison studies contaminated by outliers	Psychological methods
Roduit, Sabrina; Crevoisier Abdel Aziz, Cécile; Aeby, Gaëlle; Sucari, Marina Abigail	L'impact du COVID-19 sur la pratique des tribunaux de première instance : une transition à la digitalisation manquée ?	Justice - Justiz - Giustizia
Temesvary, Zsolt; Roduit, Sabrina; Drilling, Matthias	Health vulnerabilities of undocumented central and eastern European migrants in Switzerland	Journal of Migration and Health
Titi-Ofei, Regina; Kipruto, Hillary; Atweam, Dominic; Ofose, Anthony Adofo; Rossier, Clementine; Titi-Ofei, Regina; Kipruto, Hillary; Atweam, Dominic; Ofose, Anthony Adofo; Rossier, Clementine	Exploring the Various Sources of Mortality Estimation in Ghana: A Scoping Review of Data Sources, Challenges, and Opportunities	Healthcare
Refle, Jan-Erik; Elezovic, Adela Sanela; Burton-Jeangros, Claudine; Jackson, Yves	Non-State Regulators? Civil Society as Extension of the State in a Context of a Regularization Scheme for Undocumented Migrants	European Policy Analysis
Ganjour, Olga; Girardin, Myriam; Zufferey, Marie-Eve; Nemitz Piguët, Camille; Tettamanti, Manuel; Huri, Sandra; Widmer, Eric	Devenir autonome pour être adulte. Ressources et enjeux	Sociograph
Ghisletta, Paolo	Challenges and opportunities of psychological aging research	European Journal of Ageing

Vidal-Piñeiro, Didac; Sørensen, Øystein; Strømstad, Marie; Amlien, Inge K.; Baaré, William; Bartrés-Faz, David; Brandmaier, Andreas M.; Cattaneo, Gabriele; Düzel, Sandra; Ghisletta, Paolo; Henson, Richard N.; Kühn, Simone; Lindenberger, Ulman; Mowinckel, Athanasia M.; Nyberg, Lars; Pascual-Leone, Alvaro; Roe, James M.; Solana-Sánchez, Javier; Solé-Padullés, Cristina; Watne, Leiv Otto; Wolfers, Thomas; Franz, Carol E.; Kremen, William S.; Lyons, Michael J.; Dale, Anders M.; Elman, Jeremy A.; Fennema-Notestine, Christine; Panizzon, Matthew S.; Reynolds, Chandra A.; Bangen, Katherine; Bell, Tyler R.; Boake, Corwin; Bolar, Divya S.; Buckner, Randy; Cronin-Golomb, Alice; Dorros, Stephen M.; Eaves, Lindon; Eisen, Seth; Eyler, Lisa T.; Gillespie, Nathan A.; Granholm, Eric; Gustavson, Daniel E.; Hagler, Donald J.; Hauger, Richard L.; Jacobs, Diane; Jacobson, Kristen; Jak, Amy; Levine, Gig; Liu, Thomas; Logue, Mark; McEvoy, Linda K.; McKenzie, Ruth E.; Mendoza, Sally; Neale, Michael C.; Rissman, Robert A.; Smith, Nicholas; Tang, Rongxiang; Toomey, Rosemary; Tsuang, Ming; Tu, Xin M.; Wingfield, Art; Xian, Hong; Hellhammer, Dirk; Schaie, Warner; Lupien, Sonia; Fischl, Bruce; Seidman, Larry; Rana, Brinda; Jernigan, Terry; Murphy, Claire; Thompson, Wesley; Schork, Nicholas; Walhovd, Kristine B.; Fjell, Anders M.	Vulnerability to memory decline in aging revealed by a mega-analysis of structural brain change	Nature communications
Broghammer, Simon; Gagesch, Michael; Wiczorek, Maud; Kressig, Reto W.; Manz, Markus G.; Orav, E. John; Bischoff-Ferrari, Heike A.; for the DO-HEALTH Research Group	Hemoglobin levels and frailty status in generally healthy and active community-dwelling adults age 70 years and older in the three-year DO-HEALTH study	Annals of Hematology
Wiczorek, Maud; Freystaetter, Gregor; Theiler, Robert; Siebert, Uwe; Egli, Andreas; Masud, Tahir; Kanis, John A.; Bischoff-Ferrari, Heike A.	Sex-Specific Fall Trajectories and Associated Self-Reported Risk Factors: A Prospective Analysis of the 3-Year 5-Country DO-HEALTH Trial	Journal of the American Medical Directors Association
Bischoff-Ferrari, Heike A.; Gängler, Stephanie; Wiczorek, Maud; Belsky, Daniel W.; Ryan, Joanne; Kressig, Reto W.; Stähelin, Hannes B.; Theiler, Robert; Dawson-Hughes, Bess; Rizzoli, René; Vellas, Bruno; Rouch, Laure; Guyonnet, Sophie; Egli, Andreas; Orav, E. John; Willett, Walter; Horvath, Steve	Individual and additive effects of vitamin D, omega-3 and exercise on DNA methylation clocks of biological aging in older adults from the DO-HEALTH trial	Nature Aging
Bischoff-Ferrari, Heike A.; Dawson-Hughes, Bess; Orav, John E.; Ceglia, Lisa; Egli, Andreas; Kistler-Fischbacher, Melanie; Wiczorek, Maud; de Godoi Rezende Costa Molino, Caroline	Effect of calcifediol and cholecalciferol on muscle function in postmenopausal women: a randomized controlled trial	Osteoporosis International
Ganjour, Olga; Widmer, Eric D.; Roca i Escoda, Marta	Family networks of lesbian and gay people in Switzerland	Family Relations
Décombe, Amandine; Scarampi, Chiara; Malleville, Elora; Capdevielle, Delphine; Gilbert, Sam J.; Raffard, Stéphane	Non-optimal cognitive offloading in schizophrenia in a prospective memory task: Influence of both metacognitive beliefs and cognitive effort avoidance	Journal of Neuropsychology
Scarampi, Chiara; Kliegel, Matthias	Metacognition for prospective memory performance in younger and older adults: does the reference point affect our judgments?	Aging, Neuropsychology, and Cognition

Mack, Melanie; Scarampi, Chiara; Joly-Burra, Emilie; Zuber, Sascha; Freitas, Cláudia de; Teixeira, Raquel; Kliegel, Matthias	Enhancing Mental Health and Cognitive Function in Older Adults: A Swiss Perspective on Public Health Interventions and Stigma Mitigation Strategies Informed by a Desk Review	Swiss Psychology Open: the official journal of the Swiss Psychological Society
Teixeira, Raquel; de Freitas, Cláudia; Sanna, Liuska; Prina, Eleonora; Turrini, Giulia; Brizar, Amber S.; Gherdan, Cătălin; Kazlauskas, Evaldas; Dumarkaitė, Austėja; Wasmus, Henrik; Fleck, Leonie; Reininghaus, Ulrich; Mack, Melanie; Scarampi, Chiara; Välimäki, Maritta; Satamo, Maija; Tol, Wietse A.	Co-creating mental health promotion and prevention interventions with groups in vulnerable situations in Europe: a mixed-methods study protocol for co-creation implementation and participatory evaluation	Health Research Policy and Systems
Hinvest, Neal S.; Ashwin, Chris; Hijazy, Muhammad; Carter, Felix; Scarampi, Chiara; Stothart, George; Smith, Laura G. E.	Inter-brain synchrony is associated with greater shared identity within naturalistic conversational pairs	British Journal of Psychology
Dugle, Isabelle; Reihls, Lilia; Edwards, Brandon H.; Gavin, Mackenzie; Privette, Meris; Rimmele, Ulrike; Steinmetz, Katherine R. Mickley	How Does Paced Breathing Influence Post-Emotion Encoding?	Motivation and Emotion
Riegel, Monika; Rodrigues, Daniela Barros; Antypa, Despina; Rimmele, Ulrike	Distinct cortisol effects on item and associative memory across memory phases	Psychoneuroendocrinology
Riegel, Monika; Granja, Daniel; Amer, Tarek; Vuilleumier, Patrik; Rimmele, Ulrike	Opposite effects of emotion and event segmentation on temporal order memory and object-context binding	Cognition and Emotion
Baechli, Mirjam; Lalive, Rafael; Pellizzari, Michele	Helping Jobseekers with Recommendations Based on Skill Profiles or past Experience: Evidence from a Randomized Intervention	IZA Discussion Papers
Bornatici, Christina; Felder, Max; Gianettoni, Lavinia; Mordasini, Roxane; Steinmetz, Stephanie	Measuring assigned sex, gender identity, and sexual orientation in population surveys FORS	FORS Guides
Guilley, Edith; Gianettoni, Lavinia; Blondé, Jérôme; Gross, Dinah; Foretay, Taïs; Déjussel, Morgane	What kind of intervention for heterosexism in training institutions? The perspective of young people in professional education	Agora débats/jeunesses
Blondé, Jérôme; Gianettoni, Lavinia; Guilley, Edith; Gross, Dinah; Foretay, Taïs; Déjussel, Morgane	Gender Discrimination and Hegemonic Masculinity in Study Fields: A Multi-Level Analysis Among Female and Male Students in Vocational Education	Social Psychological Bulletin
Mader, Philip; Morvant-Roux, Solène; Ecuyer, Brendan	Risky waters: Household debts for financialised inclusion	Geoforum
Widmer, Eric D.; Girardin, Myriam; Ciobanu, Ruxandra Oana	Do Conflict Structures of Family Networks Matter for Loneliness in Later Life? The Case of a Cohort of Swiss Older Adults	Personal Relationships
Falomir-Pichastor, Juan M.; Confino, Dan; Anderson, Joel R.; Koc, Yasin	Perceived Biological Bases of Sexual Orientation and Sexual Prejudice: The Moderating Role of Gender and Religious Beliefs	Archives of Sexual Behavior
Vétois, Matthieu; Green, Eva G. T.; Falomir-Pichastor, Juan M.	Immigration salience and double standards: differential impacts on prejudice and far-right support between Ukrainian refugees and other immigrant groups / La saliencia de la inmigración y los	International Journal of Social Psychology

	dobles estándares: impactos diferenciales en los prejuicios y el apoyo a la extrema derecha entre los refugiados ucranianos y otros grupos de inmigrantes	
Vétois, Matthieu; Geisser, Christopher; Green, Eva G. T.; Falomir-Pichastor, Juan M.	Normalizing far-right nativist policies: how source-message dissociation and negative immigration news reduce emotional discomfort and increase policy support	Social Influence
Ghisletta, Paolo; Aichele, Stephen; Gerstorf, Denis; Carollo, Angela; Lindenberger, Ulman	Verbal Fluency Selectively Predicts Survival in Old and Very Old Age	Psychological Science
Ghisletta, Paolo; Mason, Fabio	Latent vs. Manifest Variable Analyses to Test Group Differences in a Two-Group Randomized Pretest-Posttest Design	Structural Equation Modeling: A Multidisciplinary Journal
Lampraki, Charikleia; Zuber, Sascha; Turoman, Nora; Joly-Burra, Emilie; Mack, Melanie; Laera, Gianvito; Scarampi, Chiara; Rostekova, Adriana; Kliegel, Matthias; Ihle, Andreas	Profiles of social isolation and loneliness as moderators of the longitudinal association between uncorrected hearing impairment and cognitive aging	Communications Psychology
Constant, Martin; Mandal, Ananya; Asanowicz, Dariusz; Panek, Bartłomiej; Kotlewska, Ilona; Yamaguchi, Motonori; Gillmeister, Helge; Kerzel, Dirk; Luque, David; Molinero, Sara; Vázquez-Millán, Antonio; Pesciarelli, Francesca; Borelli, Eleonora; Ramzaoui, Hanane; Beck, Melissa; Somon, Bertille; Desantis, Andrea; Castellanos, M. Concepción; Martín-Arévalo, Elisa; Manini, Greta; Capizzi, Mariagrazia; Gokce, Ahu; Özer, Demet; Soyman, Efe; Yılmaz, Ece; Eayrs, Joshua O.; London, Raquel E.; Steendam, Tabitha; Frings, Christian; Pastötter, Bernhard; Szaszko, Bence; Baess, Pamela; Ayatollahi, Shabnamalsadat; León Montoya, Gustavo A.; Wetzel, Nicole; Widmann, Andreas; Cao, Liyu; Low, Xueqi; Costa, Thiago L.; Chelazzi, Leonardo; Monachesi, Bianca; Kamp, Siri-Maria; Knopf, Luisa; Itier, Roxane J.; Meixner, Johannes; Jost, Kerstin; Botes, André; Braddock, Carley; Li, Danqi; Nowacka, Alicja; Quenault, Marlo; Scanzi, Daniele; Torrance, Tamar; Corballis, Paul M.; Laera, Gianvito; Kliegel, Matthias; Welke, Dominik; Mushtaq, Faisal; Pavlov, Yuri G.; Liesefeld, Heinrich R.	A multilab investigation into the N2pc as an indicator of attentional selectivity: Direct replication of Eimer (1996)	Cortex
de Maio Nascimento, Marcelo; Marques, Adilson; Ferrari, Gerson; Martins, Francisco; França, Cíntia; Gouveia, Élvio R.; Ihle, Andreas	Four-year associations of wish-to-die trajectories with changes in the frailty of European citizens aged 50 and over	Journal of Affective Disorders
Meier, Clément; Wiczorek, Maud; Aschwanden, Damaris; Ihle, Andreas; Kliegel, Matthias; Maurer, Jürgen	Physical activity partially mediates the association between health literacy and mild cognitive impairment in older adults: cross-sectional evidence from Switzerland	European Journal of Public Health
de Maio Nascimento, Marcelo; Ihle, Andreas; Ferrari, Gerson; Gouveia, Élvio R.; Marques, Adilson	Sex-related differences in the associations between wishing to die, grip strength, and physical activity: An analysis in European middle-aged and older adults	Journal of Affective Disorders

Constant, Martin; Mandal, Ananya; Asanowicz, Dariusz; Panek, Bartłomiej; Kotlewska, Ilona; Yamaguchi, Motonori; Gillmeister, Helge; Kerzel, Dirk; Luque, David; Molinero, Sara; Vázquez-Millán, Antonio; Pesciarelli, Francesca; Borelli, Eleonora; Ramzaoui, Hanane; Beck, Melissa; Somon, Bertille; Desantis, Andrea; Castellanos, M. Concepción; Martín-Arévalo, Elisa; Manini, Greta; Capizzi, Mariagrazia; Gokce, Ahu; Özer, Demet; Soyman, Efe; Yılmaz, Ece; Eayrs, Joshua O.; London, Raquel E.; Steendam, Tabitha; Frings, Christian; Pastötter, Bernhard; Szaszko, Bence; Baess, Pamela; Ayatollahi, Shabnamalsadat; León Montoya, Gustavo A.; Wetzell, Nicole; Widmann, Andreas; Cao, Liyu; Low, Xueqi; Costa, Thiago L.; Chelazzi, Leonardo; Monachesi, Bianca; Kamp, Siri-Maria; Knopf, Luisa; Itier, Roxane J.; Meixner, Johannes; Jost, Kerstin; Botes, André; Braddock, Carley; Li, Danqi; Nowacka, Alicja; Quenault, Marlo; Scanzi, Daniele; Torrance, Tamar; Corballis, Paul M.; Laera, Gianvito; Kliegel, Matthias; Welke, Dominik; Mushtaq, Faisal; Pavlov, Yuri G.; Liesefeld, Heinrich R.	A large-scale replication of Eimer (1996): Can the N2pc be elicited by an isolated target?	International Journal of Psychophysiology
Verspeek, Emmie A. M.; Haas, Maximilian; Brehmer, Yvonne; van Scheppingen, Manon A.; Bender, Nadine; Kliegel, Matthias; Hering, Alexandra	Changes in cognitive functioning and quality of life after relocation to a nursing home: a prospective longitudinal study of Swiss nursing home residents	European Journal of Ageing
Naef, Patrick	Navigating Criminal Governance in Colombia: A Life Stories Approach	Critical Criminology
Seesjärvi, Erik; Zuber, Sascha; Joly-Burra, Emilie; Kliegel, Matthias; Salmi, Juha	A naturalistic virtual reality task reveals difficulties in time-based prospective memory and strategic time-monitoring in children with ADHD	Scientific Reports
França, Cíntia; Saldanha, Carolina; Martins, Francisco; de Maio Nascimento, Marcelo; Marques, Adilson; Ihle, Andreas; Sarmiento, Hugo; Campos, Pedro; Gouveia, Elvino Rúbio	Lower body strength and body composition in female football	Scientific Reports
da Silva, Sayonara Pereira; Lampraki, Charikleia; dos Santos Rêgo, Tainá; Ghisletta, Paolo; Kliegel, Matthias; Maurer, Jürgen; Studer, Matthias; Gouveia, Elvino Rúbio; de Maio Nascimento, Marcelo; Ihle, Andreas	Can cognitive reserve offset APOE-related Alzheimer's risk? A systematic review	Ageing Research Reviews
Lampraki, Charikleia; Jopp, Daniela S.; Roquet, Angélique; Hoffman, Adar; Uittenhove, Kim	Development of depressive symptoms during the COVID-19 crisis: the role of coping strategies and their change	BMC Psychology
Cheng, Mengling; Van Herreweghe, Lore; Gireesh, Aswathikutty; Sieber, Stefan; Ferraro, Kenneth F.; Cullati, Stéphane	Life course socioeconomic position and cognitive aging in later life: A scoping review	Advances in Life Course Research
Smit, Frerik; Jolidon, Vladimir; van der Linden, Bernadette WA; Rodondi, Nicolas; Cullati, Stéphane; Chiolerio, Arnaud	Cancer screening outside of age recommendations: a population-based study	BMC Public Health
Gerstorf, Denis; Aichele, Stephen; Lindenberger, Ulman; Rabbitt, Patrick; Ghisletta, Paolo	Little to no evidence for historical improvements in verbal learning among older adults	Psychology and Aging

Vacchiano, Mattia; and Valente, Riccardo	Going out before the COVID-19 pandemic protected psychological health during the first lockdown: a model based on social capital theory	Leisure Studies
Vacchiano, Mattia; Fernandez, Guillaume; Fernandez-Garcia, Javier	Mediating effects of social support between telework and well-being: protocol for a systematic review	BMJ open
Tidwell, Colin A.; Danvers, Alexander F.; Pfeifer, Valeria A.; Abel, Danielle B.; Alisic, Eva; Beer, Andrew; Bierstetel, Sabrina J.; Bollich-Ziegler, Kathryn L.; Bruni, Michelle; Calabrese, William R.; Chiarello, Christine; Demiray, Burcu; Dimidjian, Sona; Fingerman, Karen L.; Haas, Maximilian; Kaplan, Deanna M.; Kim, Yijung K.; Knezevic, Goran; Lazarevic, Ljiljana B.; Luo, Minxia; Macbeth, Alessandra; Manson, Joseph H.; Mascaro, Jennifer S.; Metcalf, Christina; Minor, Kyle S.; Moseley, Suzanne; Polsinelli, Angelina J.; Raison, Charles L.; Rilling, James K.; Robbins, Megan L.; Sbarra, David; Slatcher, Richard B.; Sun, Jessie; Vasileva, Mira; Vazire, Simine; Mehl, Matthias R.	Are women really (not) more talkative than men? A registered report of binary gender similarities/differences in daily word use	Journal of Personality and Social Psychology
Yuan, Chen-wei; Yang, Tian-xiao; Zuber, Sascha; Su, Xiao-min; An, Fu-sen; Li, Shuai-biao; Wang, De-heng; Wang, Ya; Chan, Raymond C. K.	Comparing effects of episodic future thinking and cue salience to improve different types of prospective memory in typically developing school-age children	Journal of Experimental Child Psychology
Vacchiano, Mattia; de Bel, Vera; Widmer, Eric	Being Your Own Boss: Network Determinants of Young People's Orientations Towards Self-Employment	Social Indicators Research
Refle, Jan-Erik	What the small country Tunisia teaches us about democratic backsliding in the U.S. – and what not – DeFacto	DeFacto – more than opinions
Menéndez-Granda, Marta; Schmidt, Nadine; Laera, Gianvito; Clenin, Annick; Kliegel, Matthias; Orth, Michael; Peter, Jessica	Factors explaining age-related prospective memory performance differences: a meta-analysis	The Journals of Gerontology: Series B
Zuber, Sascha; Kliegel, Matthias; Schumacher, Vera; Martin, Mike; Ghisletta, Paolo; Horn, Sebastian	Individual differences and 11-year longitudinal changes in older adults' prospective memory: A comparison with episodic memory, working memory, processing speed, and verbal knowledge	Journal of Memory and Language
Rossier, Clémentine; Potarca, Gina	Any Hope outside of the Dual Earner Model? Health in Male and Female Breadwinner Families across Institutional Contexts in Europe	Social Indicators Research
Rostekova, Adriana; Lampraki, Charikleia; Maurer, Jürgen; Meier, Clément; Wiczorek, Maud; Ihle, Andreas	Longitudinal relationships between pet ownership and cognitive functioning in later adulthood across pet types and individuals' ages	Scientific Reports
Refle, Jan-Erik; Jackson, Yves; Burton-Jeangros, Claudine	Resilience Among Undocumented Migrants: An Analysis of the Likelihood to Participate in a Panel Study Among Undocumented Migrants Amidst the COVID-19 Pandemic	INQUIRY: The Journal of Health Care Organization, Provision, and Financing

Cullati, Stéphane; Fakhoury, Julien; Refle, Jan-Erik; Consoli, Liala; Jackson, Yves; Burton-Jeangros, Claudine	Reserves and their role in protecting against anxiety and depressive symptoms among undocumented migrants undergoing regularization	Scientific Reports
--	---	--------------------